

FOR SALE/LEASE



Former Kroger Store

101 COMMERCE DRIVE, MAUMELLE, AR 72113



Offering

Sale price: **\$1,850,000**

Lease rate: **\$7.00/SF NNN**

Building size: Approximately 32,689 SF

Information & Amenities

- › Zoned: "C-3"
- › Current Kroger has relocated within same trade area
- › 200 parking spaces
- › One truck well on north side of building
- › Located on a 5.75-acre lot
- › Traffic count: 20,800 VPD at Maumelle Blvd. & Commerce Dr.

2010 Demographics	1 Mile	3 Mile	5 Mile
Population	4,942	18,603	33,575
Median HH Income	\$57,593	\$74,396	\$73,189
Households	2,161	7,406	13,455

This document has been prepared by Colliers International for advertising and general information only. Colliers International makes no guarantees, representations or warranties of any kind, expressed or implied, regarding the information including, but not limited to, warranties of content, accuracy and reliability. Any interested party should undertake their own inquiries as to the accuracy of the information. Colliers International excludes unequivocally all inferred or implied terms, conditions and warranties arising out of this document and excludes all liability for loss and damages arising there from.

Contact Us

LISTING AGENT:

TODD RICE, CCIM

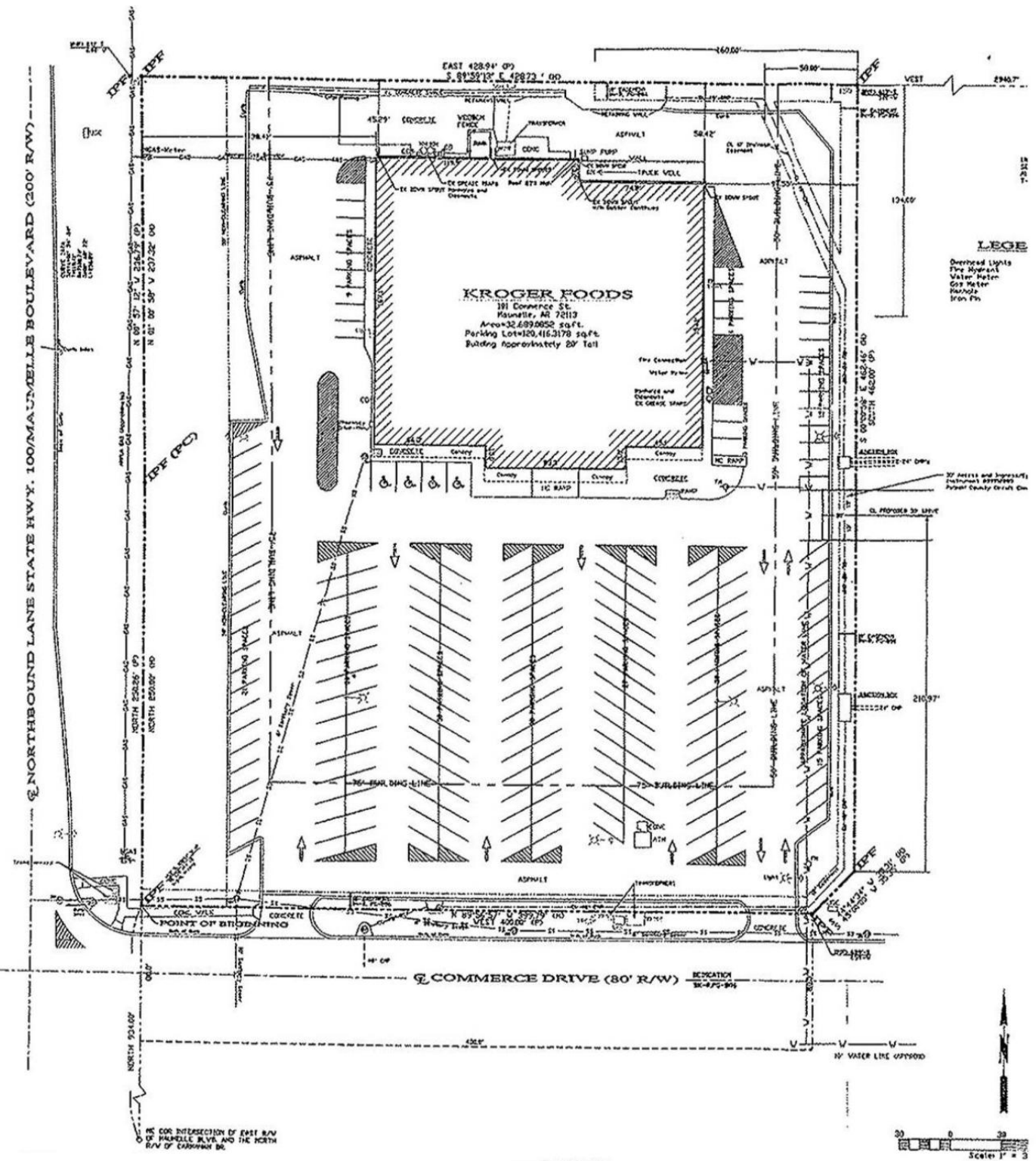
OFFICE 501 372 6161 | EXT. 202

MOBILE 501 952 9222

todd.rice@colliers.com

COLLIERS INTERNATIONAL
400 W. Capitol Ave., Ste. 1200
Little Rock, AR 72201

www.colliers.com



This document has been prepared by Colliers International for advertising and general information only. Colliers International makes no guarantees, representations or warranties of any kind, expressed or implied, regarding the information including, but not limited to, warranties of content, accuracy and reliability. Any interested party should undertake their own inquiries as to the accuracy of the information. Colliers International excludes unequivocally all inferred or implied terms, conditions and warranties arising out of this document and excludes all liability for loss and damages arising there from.

