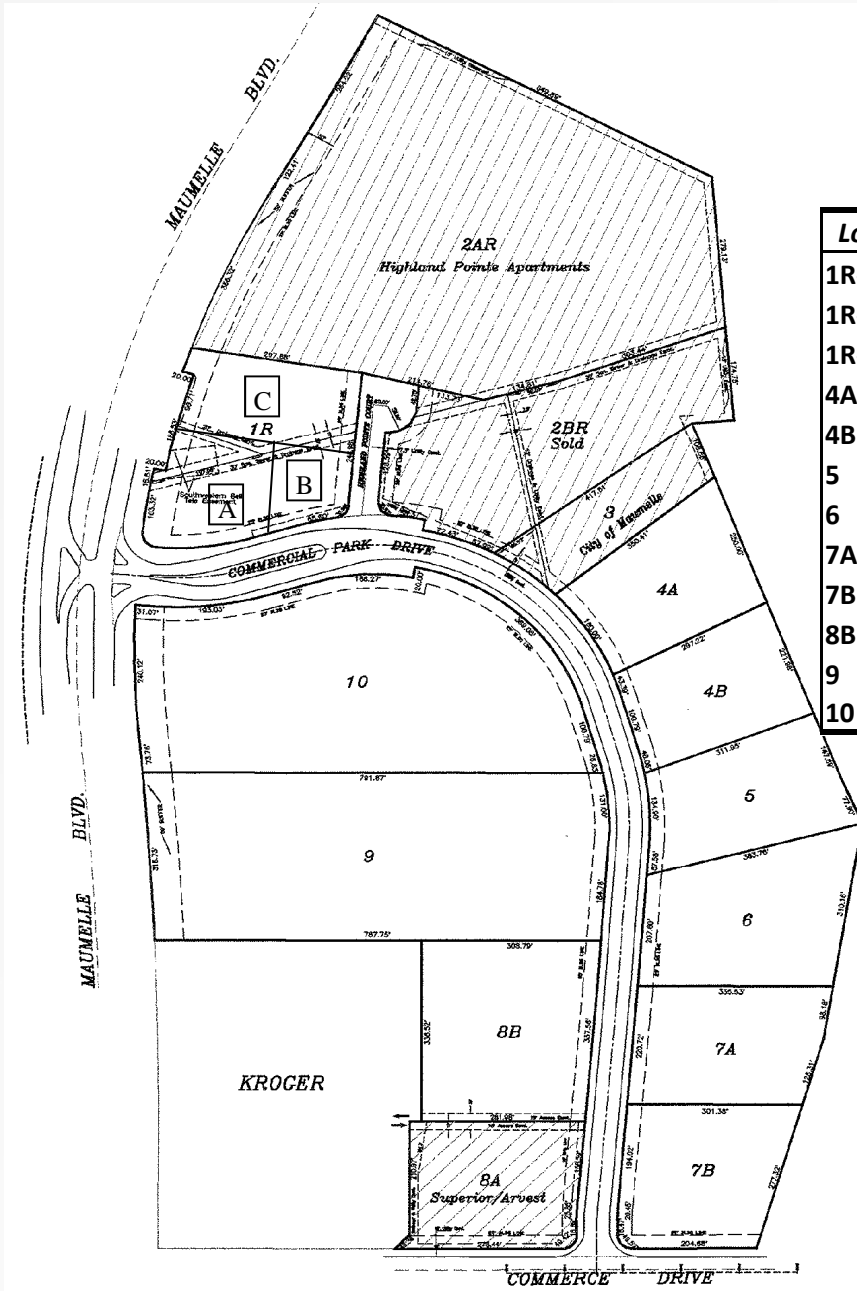


Maumelle Commercial Park

Maumelle, Arkansas

Lot Information and Pricing



Lot	Sq Feet	Acres	\$/SF	Price±
1R-A	36,808	0.845	\$ 6.50	\$ 239,252
1R-B	22,784	0.523	\$ 7.50	\$ 170,880
1R-C	45,960	1.055	\$ 5.50	\$ 252,780
4A	67,287	1.545	\$ 2.95	\$ 198,497
4B	62,337	1.432	\$ 2.95	\$ 183,894
5	69,261	1.590	\$ 2.75	\$ 190,468
6	89,004	2.043	\$ 2.65	\$ 235,861
7A	70,837	1.626	\$ 4.00	\$ 283,348
7B	72,478	1.664	\$ 4.75	\$ 344,271
8B	99,551	2.285	\$ 6.00	\$ 597,306
9	247,489	5.682	\$ 3.00	\$ 742,467
10	251,779	5.780	\$ 3.50	\$ 881,227

- ◆ Zoning is C-3
- ◆ No vehicular access will be allowed from Maumelle Blvd to Lots 1R-A, 1R-C, 9 and 10.
- ◆ Additional easements may be required, and lot dimensions may vary slightly when final plat is filed.
- ◆ Prices subject to change without notice.
- ◆ Quotations must be verified after 30 days.
- ◆ Seller to final plat each lot.
- ◆ Lots 1R-A, 1R-C, 9 and 10 have a 50' "not to be disturbed buffer" along Maumelle Blvd.

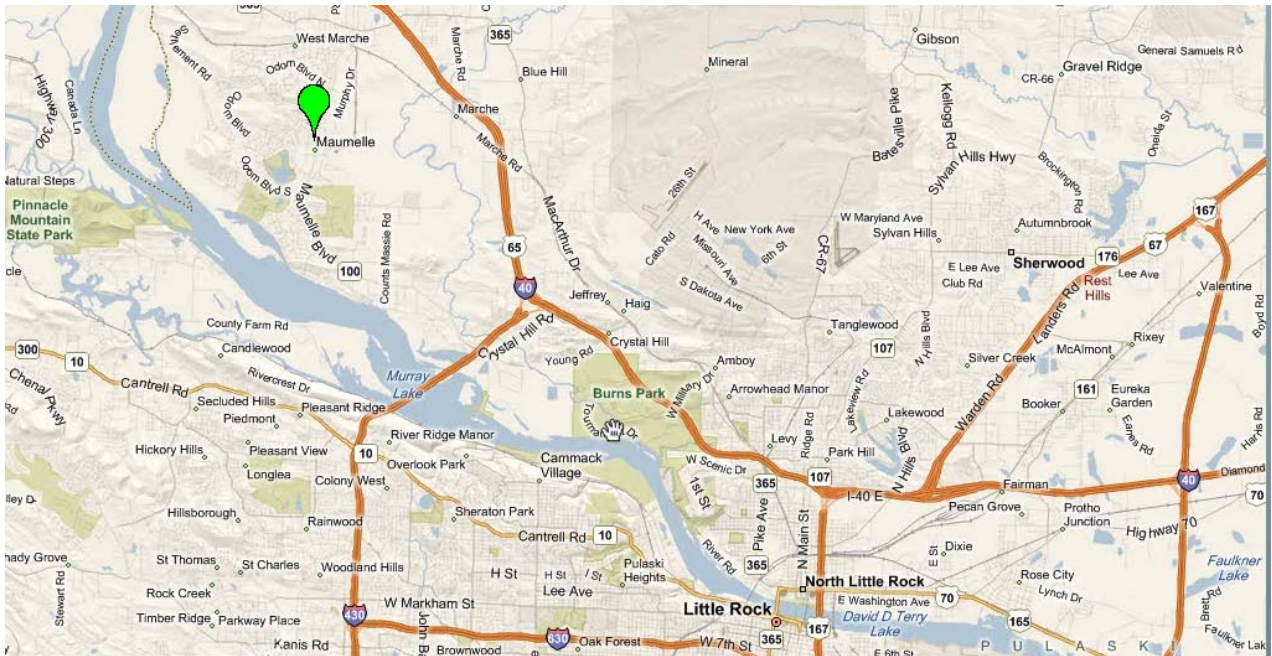
Contact: **JEFF HATHAWAY, CCIM, SIOR**
jeff@hathawaygroup.com or 501.978.4969



Coldwell Banker Commercial Hathaway Group is the agent of the owner of the property described on this information sheet.

Coldwell Banker Commercial and the Coldwell Banker Commercial Logo are registered service marks licensed to Coldwell Banker Commercial Affiliates. Each Office is Independently Owned and Operated. All information contained herein has been obtained from sources deemed reliable. However, no warranty or guarantee is made as to the accuracy of the information.

2100 Riverdale, Suite 100
 Little Rock, AR 72202
 (501) 663-5400



Maumelle Commercial Park