

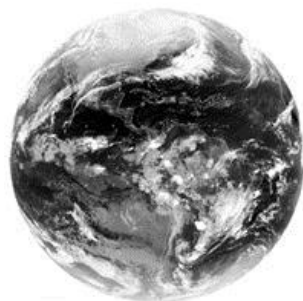
Allen, TX - Demographics

Along with an ideal location just 12 miles north of Dallas on US 75, Allen's appealing demographics have spurred along record-breaking growth. The population of approximately 85,460 is expanding with an estimated 2.8% growth rate and is anticipated to reach 90,000 by the year 2011.

[Click Here to Request a Customized Demographics Report](#)



[Allen Demographics Book \(Graphic\) PDF File](#)



Climate

Average Rainfall – 40.4 inches

Average Temperature – 64.6 degrees

Max. Mean Temperature – 76.14 degrees

Min. Mean Temperature – 53.04 degrees



Land Area

27.1059 square miles total (26.43 incorporated)

Elevation – 670 feet (City Hall)

Longitude 96.7 degrees

Latitude 33.1 degrees

Income

The 2010 estimate of the average household income in Allen is \$109,240.

The median Allen household income is estimated at \$94,630.

Approximately 80% of the 75013 zip code (one of the two major zip codes in Allen) is composed of Allen residents with an income of \$75,000 or more. The quality of the Allen community attracts residents with a high level of spending power and disposable income. This makes Allen a prime location for restaurants, shopping centers and other retail venues.

Population

According to the North Central Texas Council of Governments' 2000-2009 survey, Allen continues to rank as one of the Top Ten Growth Cities with one of the highest population growth rates in the North Central Texas Region.

Population

85,647 as of July 31, 2011

84,246 as of Census conducted April 2010

Allen Population Growth*

(as of Jan. 1)

2009 – 82,660

2008 – 80,408

2007 – 76,579

2006 – 70,582

2005 – 68,076

2004 – 64,663

2003 – 60,195

2002 – 55,576

2001 – 49,049

2000 – 43,686

1999 – 39,482

1998 – 35,744

Allen Population Growth Rates

2008 – 2.80%

2007 – 5.00%

2006 – 8.50%

2005 – 3.68%

2004 – 5.28%

2003 – 7.42%

2002 – 8.31%

2001 – 13.31%

2000 – 12.28%

1999 – 10.65%

1998 -10.46%

* Source: City of Allen

Collin County Population**

2010 – 810,000

2008 – 750,000

2007 – 730,000

2006 – 686,078

2005 – 648,800

2000 – 491,675

1990 – 264,036

1980 – 145,255

1970 – 67,421

** Source: North Central Texas Council of Governments.

Effective Jan. 1

ESTIMATED POPULATION AT BUILD OUT: 97,938

2008 Allen Population by Race

Caucasian

81.1%

African-American

6.9%

American Indian

0.4%

Asian or Pacific Islander

8.0%

Other Race

2.1%

Two or More Races

1.6%

TOTAL

100.0%

Hispanic Origin (Any Race)

10.8%

Not Hispanic or Latino

89.2%