



**Harrison Regional Chamber of Commerce**  
**Harrison, Boone County, Arkansas Business Profile**  
**March 1, 2020**

**Harrison, Boone County, AR**

Population: Harrison: 13,087 (June 12, 2019 est.)      Boone County: 37,480 (July 1, 2018 est.)  
 Median Age: 37      Median Household Income: \$37,255  
 Average Home Price: \$116,600      Cost of Living Index: 75.7

**Business and Economic Development-friendly**

- Elected and community leadership focused on business expansion and growth
- Nationally-recognized North Arkansas College
- Award-winning public-school programs throughout the area

**Workforce Focus**

- Over 400 full and part-time jobs created in 2019
- Northwest Arkansas Economic Development District (NWAEDD); North Arkansas College (NAC); Harrison Public Schools (HPS); O.U.R Educational Services Cooperative
- Workforce Initiative Network (WIN), promoting local industry opportunities to 21 area schools

**Transportation**

- US Hwy 412 Corridor initiative; \$8.8M US Hwy 62/65 improvements; \$1.6M Goblin Drive expansion; Harrison city street ‘master-plan’
- Boone County Regional Airport (HRO): 6K’ runway/parallel taxiway, full-service FBO, 85K sf ramp

**Infrastructure**

- \$4M-plus connected 100% 10gig fiber for industry, business, education
- \$2M-plus new natural gas line replaced/expanded
- ISO Fire Code Rating, from 3 to 2 in 2019
- North Arkansas Regional Medical Center, Level 3 Trauma Center

**Engagement Partners**

- Arkansas Economic Development Commission; NWAEDD; Boone County Economic Development Corporation; NAC; HPS; Harrison District Board of Realtors; and multiple civic organizations

**Quality of Life**

- Over 35 community civic, charitable organizations where time/treasure/talent can be spent
- Numerous individual, family and group sports programs, including baseball, soccer, tennis, basketball, pickleball; Brandon Burlsworth Youth Center
- Spectacular outdoor venues/destinations for hiking, canoeing, fishing, mountain biking and more

**Unemployment** (Federal Reserve Bank, St Louis, July 2019)

	2019	2018	1998
Boone County	3.5%	3.7%	11%
Arkansas	3.4%	3.6%	6.5%
US	3.7%	3.9%	4.6%

**Retail Sales, Harrison, February 2017-2020**

(ARDFA Local Tax Distribution, February 2020, based on population, includes 35% of Boone County Sales Tax Revenue)

2017	2018	2019	2020
\$42.4M	\$46.2M	\$28M	\$51.5M



In 2019:

**Prime Business:** Expansion, **\$8.6M**; New/Prospects, **\$37.3M**

**Main Street:** Expansion, **\$16.1M**; New/Prospects, **\$33.6M**

**Residential Construction Permits (City of Harrison)**

- New Build Homes: 13 homes, totaling **\$2.3M**
- Home Remodels: 21 homes, totaling **\$472K**

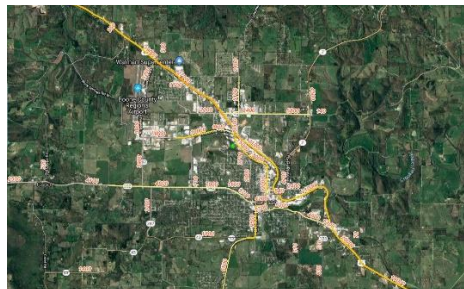
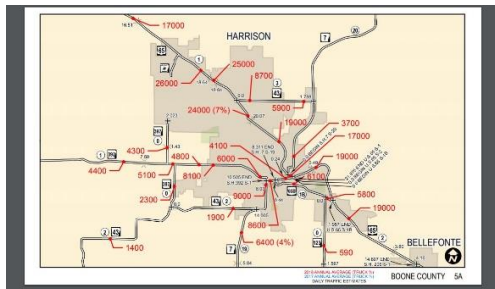
**Housing Sales/Prices (Harrison District Board of Realtors MLS)**

- **Residential**
  - o Total Number Sold: **673**
  - o Average Sales Price: **\$169,955**
- **Commercial Property**
  - o Total Number Sold: **25**
  - o Average Sales Price: **\$315,000**

**Agriculture (2017 Agriculture Census)**

- Boone County Farms: **1303** (+2% from 2012)
  - o 98% family owned; 77% have Internet
  - o Total acreage: **305,922** (+19% from 2012)
  - o Average acreage: **233** (+16% from 2012)
- Market value of products sold: **\$164M** (+32% from 2012)
  - o Crop sales: **\$3.1M** (hay/silage: \$2.2M)
  - o Livestock sales: **\$160.9M** (poultry \$106.9M; cattle \$53.7M)

**Traffic Count, 2018, Harrison, Boone County, AR**



**Mission of the Harrison Regional Chamber of Commerce:** *'...to be recognized as the premier business organization influencing Harrison's and the greater Boone County's economic and business development through leadership, education, and investor partnerships.'* For more information, please visit [www.harrison-chamber.com](http://www.harrison-chamber.com), or call 870-741-2659.