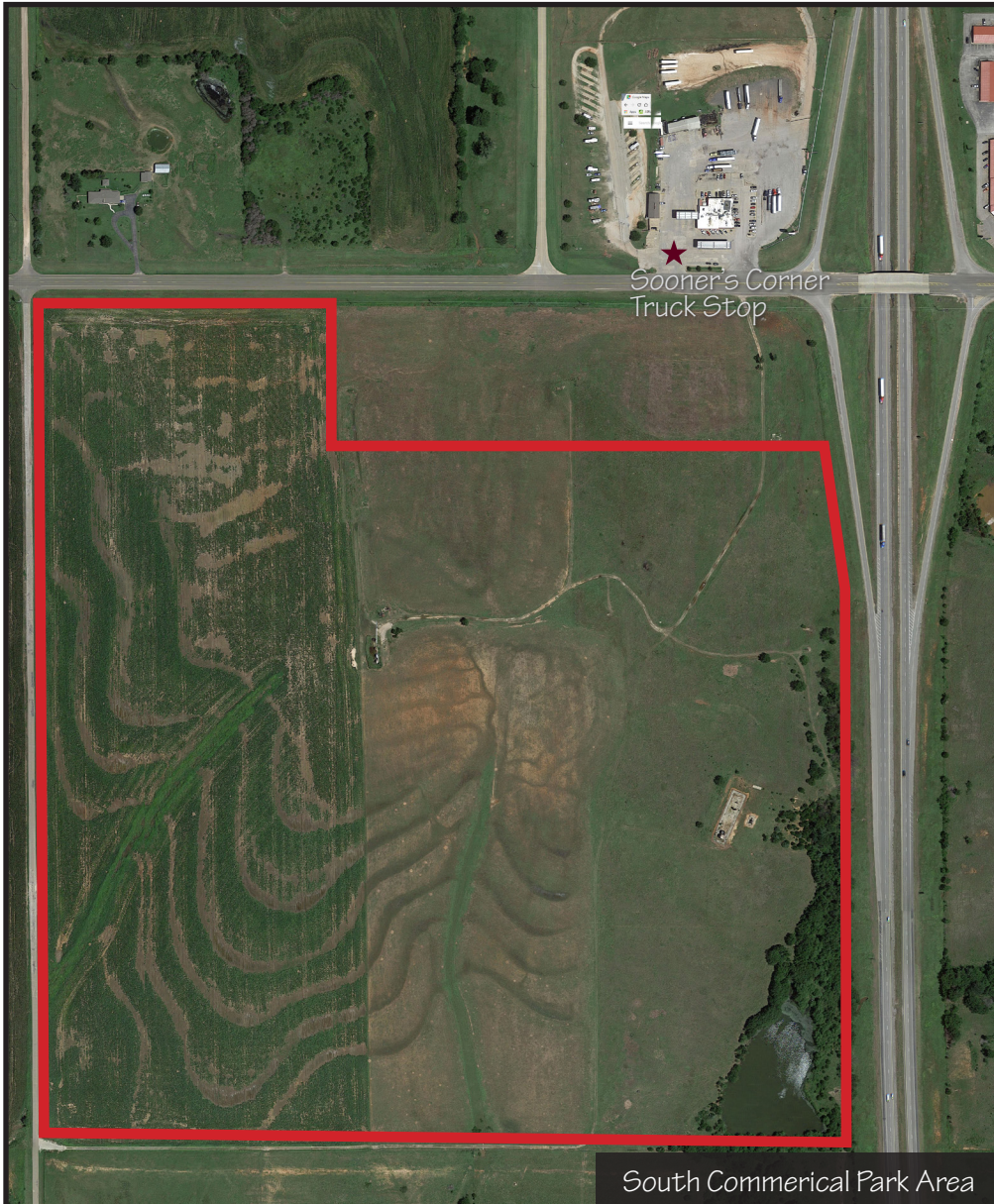




South Commercial Park

City of Perry, Ok



South Commerical Park Area



Relationship of South Commercial Park to City

Established in 2013, the South Commercial Park consists of 128 acres immediately adjacent to the western boundary of Interstate 35 and just south of Highway 77. The South Commercial Park has municipal water, sewer and electric utilities located at or adjacent to the area. The property can be subdivided into smaller tracts and is currently zoned general commercial. The park offers excellent visibility from Interstate 35 as well as Highway 77.

