

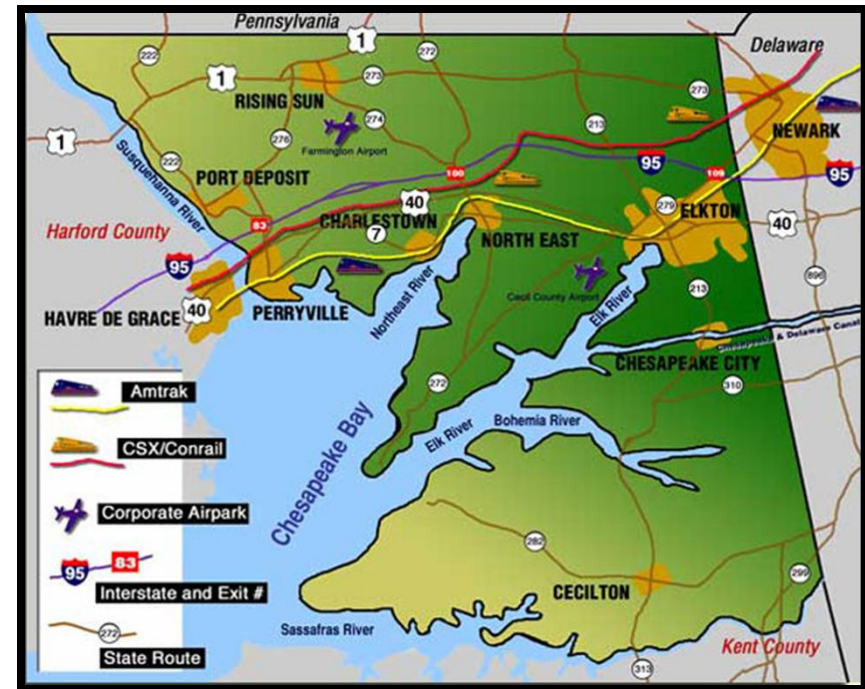
Welcome to **CECIL COUNTY, MARYLAND**



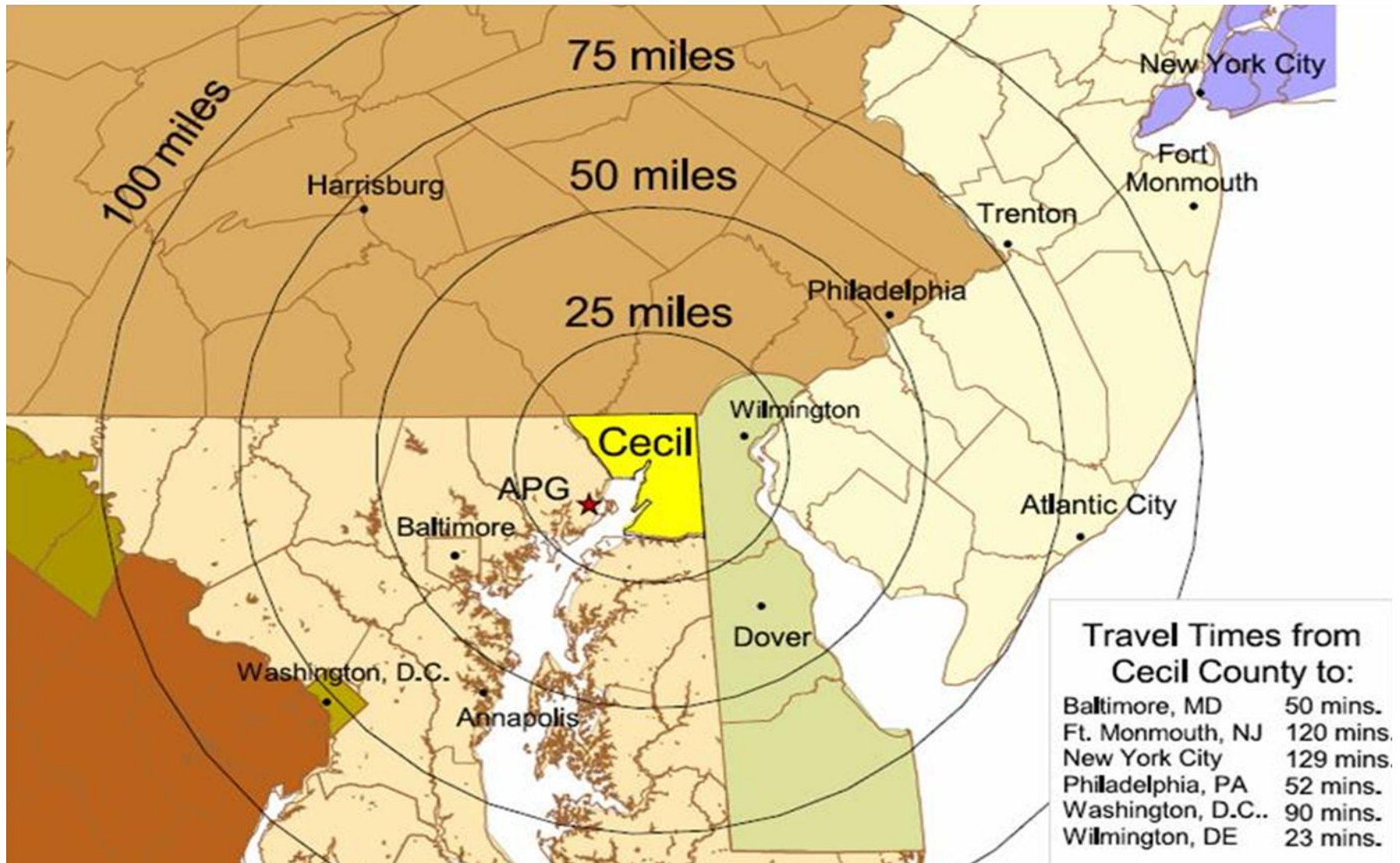
Location

Cecil County offers:

- A **strategic location** in the heart of the mid-Atlantic region that provides access from over 32% of the U.S. consumer and industrial markets in the Northeast, Midwest, and the Southeast.
- One of the nation's most comprehensive and sophisticated **transportation networks** that features access to three international airports. Amtrak and MARC provide passenger rail services within the region and beyond.
- **Close proximity** to Philadelphia, Wilmington, and Baltimore metropolitan areas.



Travel Times



Employment

Annual Average – 2013

Labor Force: 51,202
Employed: 47,296
Unemployed: 3,933
Rate: 7.7%

May 2014

Labor Force: 50,964
Employed: 48,025
Unemployed: 2,939
Rate: 5.8%



Wages

Average Weekly Wage – 2012 Annual

Cecil County: \$806

Harford County: \$920

New Castle County: \$1,129

Average Weekly Wage – 3Q 2013*

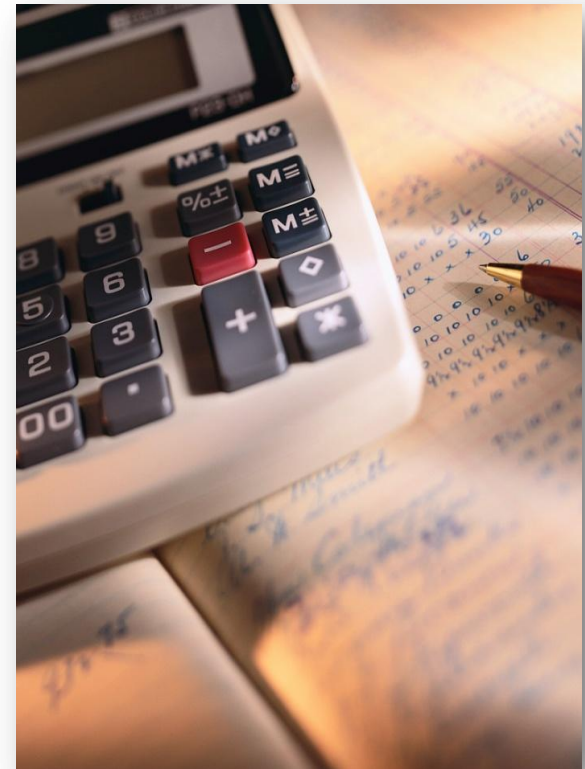
Cecil County: \$832

Harford County: \$868

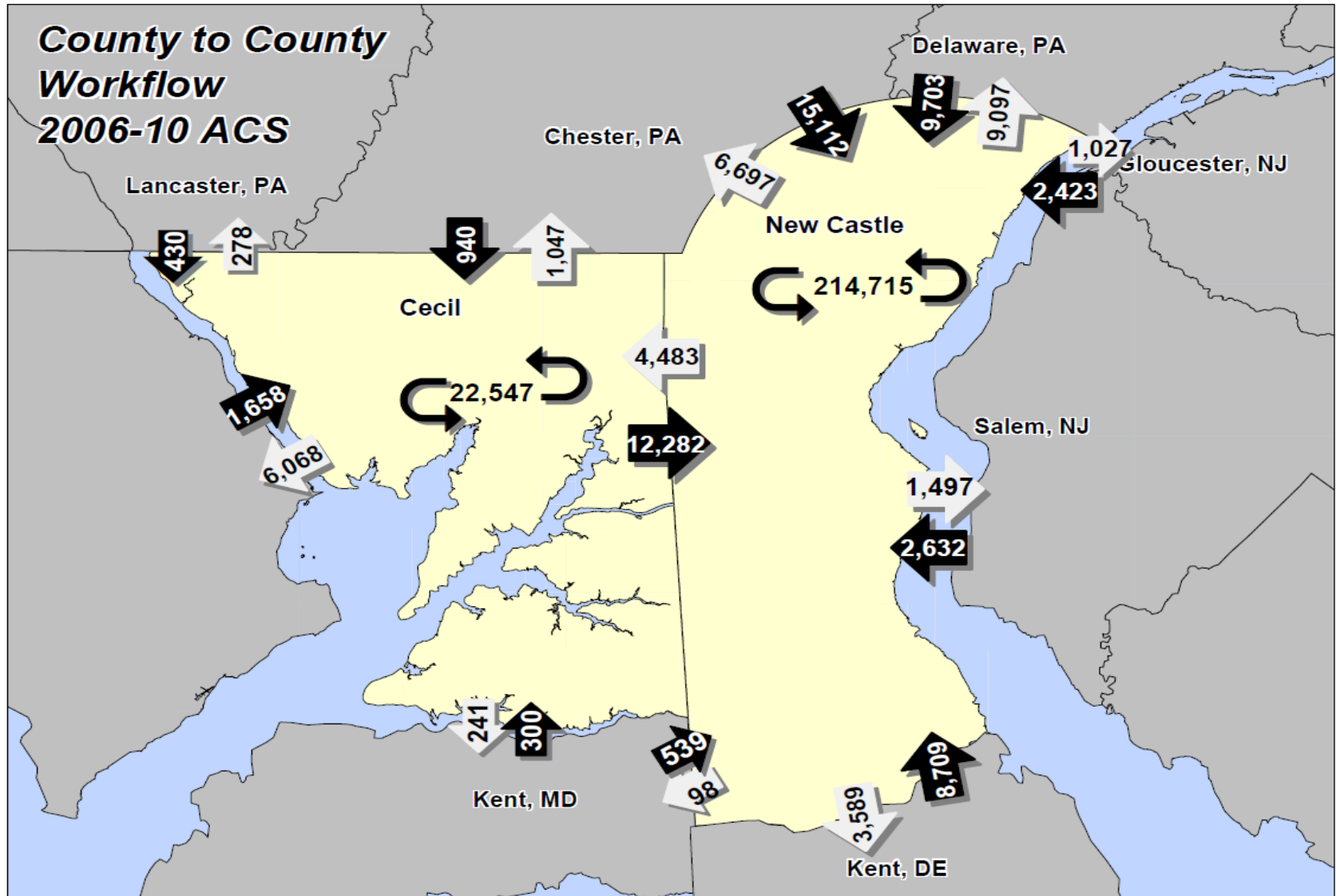
New Castle County: \$1,055

Source: Bureau of Labor Statistics

* Data are preliminary

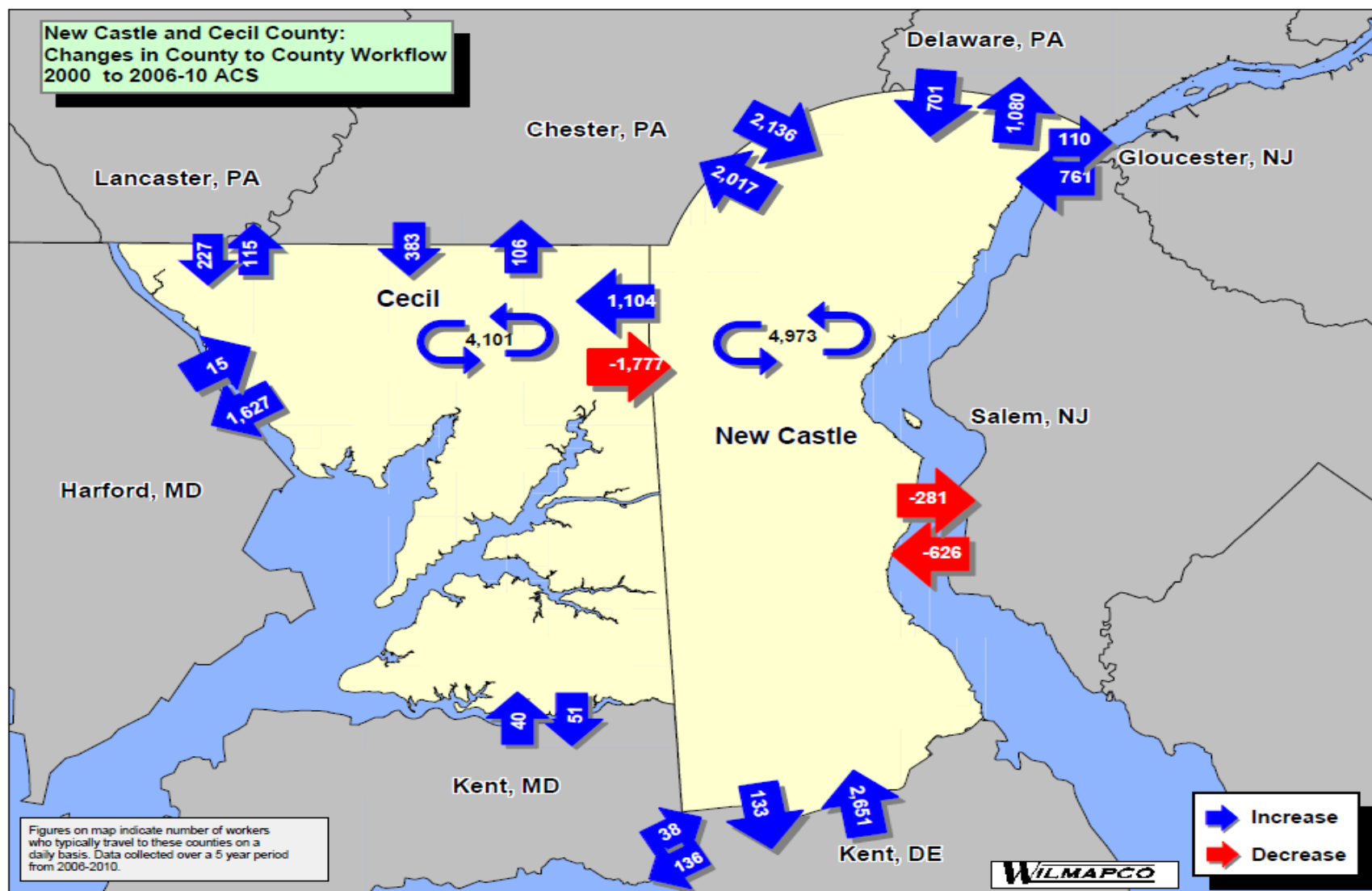


Workforce Commute



Workforce Commute

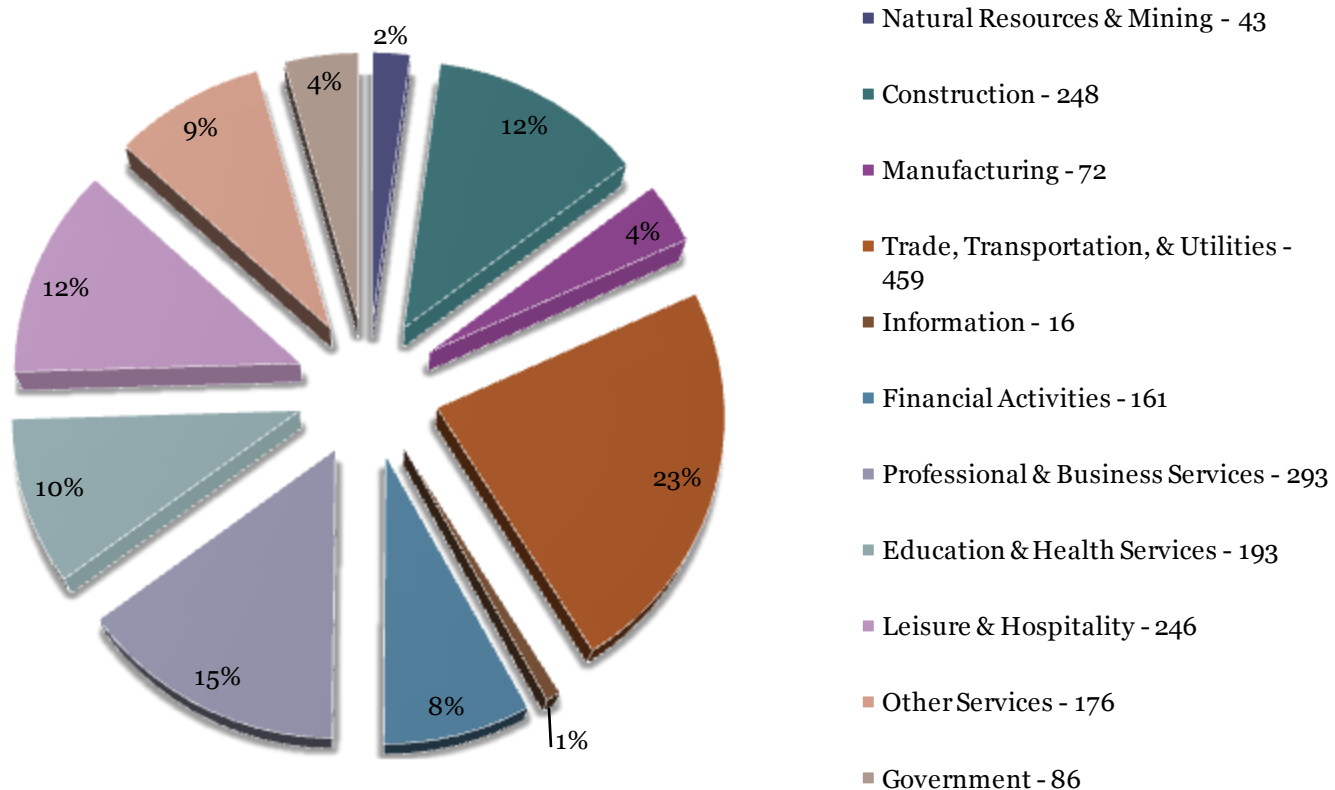
(Change Since 2000)



2012 Industry Sector Diversity

Total Employers: 1,993

Private Employers: 1,907



Source: Maryland DLLR

Major Employers

(Private)

Employer	# Workers
W.L. Gore	2,387
Perry Point V.A.	1,500
Union Hospital/Affinity	1,236
Wal-Mart	500
IKEA Maryland	500
ATK	436
Penn National Gaming	405
Terumo Medical	342
Terumo Cardiovascular	297
Cecil College	272

Employer	# Workers
Burris Logistics	250
Sandy Cove Ministries	231
Warwick Mushroom Farms	225
C&S Wholesale Grocers	224
Performance Food Group	205
Restoration Hardware	200
Moon Nurseries of MD	200
YMCA of Cecil County	200
Calvert Manor Healthcare	200

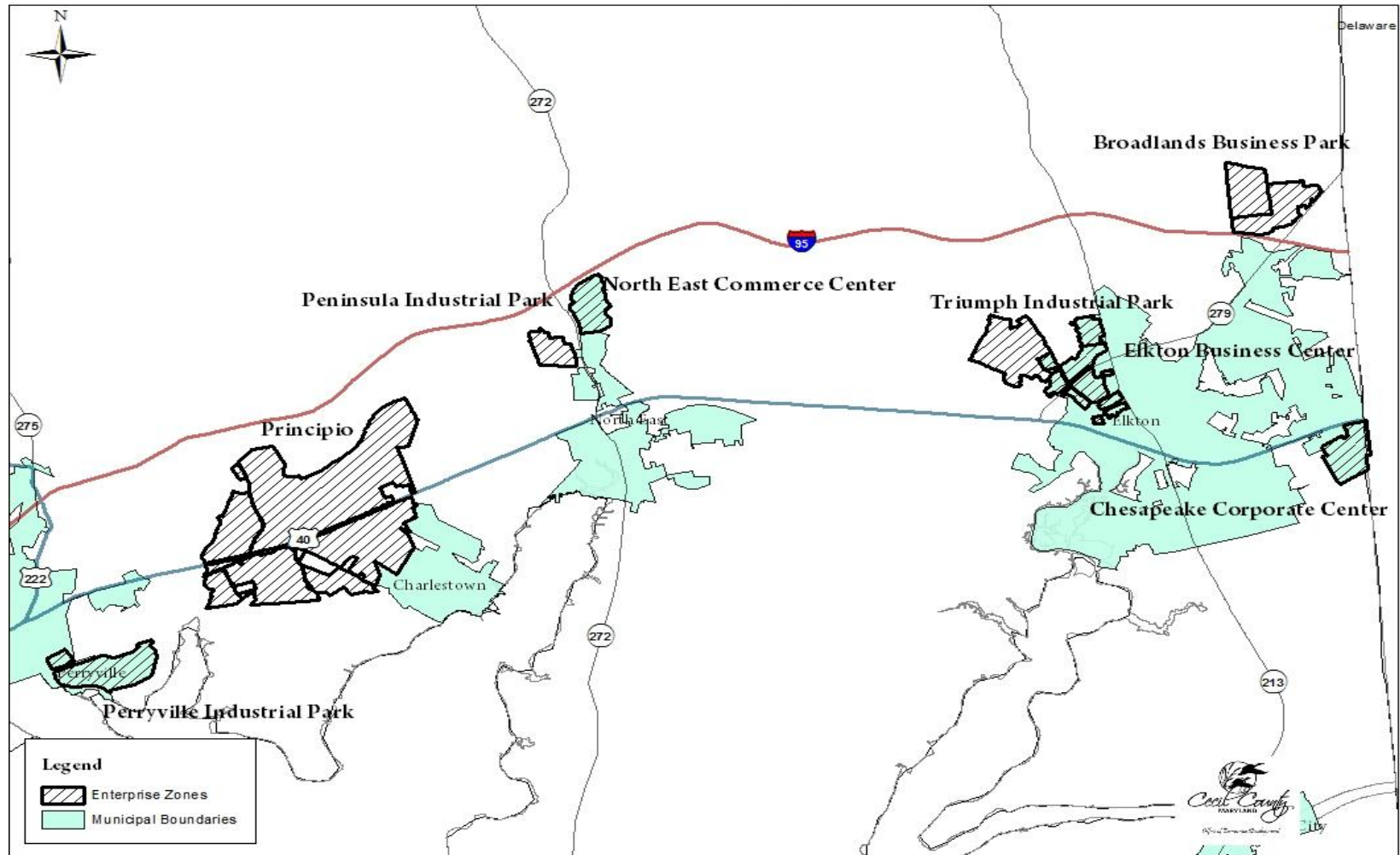
Corporations

- Home to a host of world-class companies including WL Gore & Associates, Terumo Medical, ATK, DuPont, GE and IKEA
- Distribution: Restoration Hardware, Burris Logistics, C&S Wholesale Grocers, Performance Food Group, and Herrs
- Up & coming: Cani Optical, Operative Experience, i-Lighting, Micropore
- One of the fastest growing areas in the state of Maryland
- Home to 1,993 businesses that employ over 29,306 workers



Business Parks and Enterprise Zone

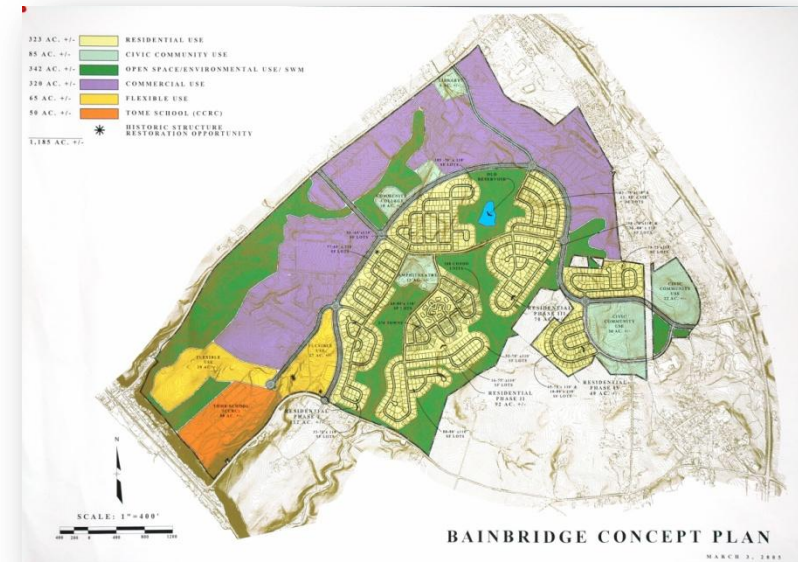
Cecil County Enterprise Zone



I-95 & MD Rt 222 Interchange

Exit 93

- **Hollywood Casino**
- **Town of Perryville**
 - Perry Point VA Medical Center
 - Amtrak
 - IKEA
- **Town of Port Deposit**
 - Bainbridge Naval Training Center
- **Principio Business Park**
 - Restoration Hardware
 - GE



Principio Business Park

Principio is a 1,000 acre master planned business park conveniently located on Rt. 40 and I-95 in North East. Sites range from 5 –1000 acres and have access to CSX Rail Service

Distance to Major metro areas:

- Baltimore – 40 miles
- Wilmington – 25 miles
- Philadelphia – 55 miles
- New York – 150 miles

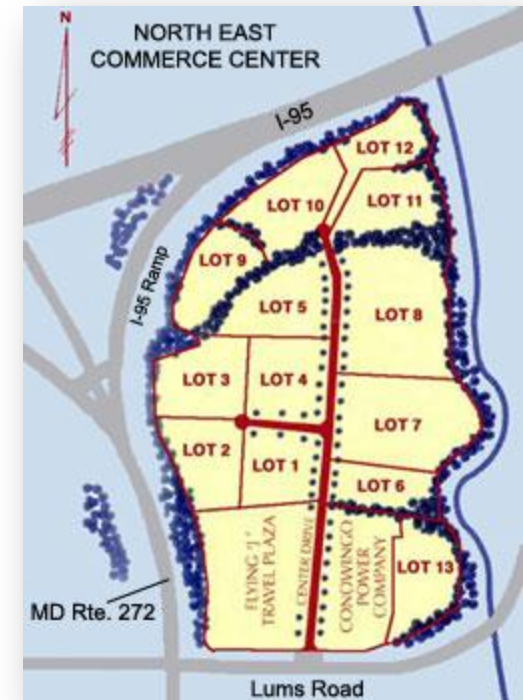
Corporate neighbors

- Restoration Hardware
- General Electric
- C&S Wholesaler Grocers



I-95 & MD Rt 272 Interchange Exit 100

- **Town of North East**
 - Elk Neck State Park
 - Sandy Cove Retreat Center
- **Cecil College**
 - New Engineering/Math Building being constructed
- **North East Commerce Center**
 - Herr's, C&S Wholesale Grocers, GSA
- **Peninsula Industrial Park**
 - Northeast Beverage, East Coast Powder, Tim Plastics



Cecil College

Cecil College continues to build enrollment, programs, and facilities. In addition, collaborations are being developed while broadening and strengthening the approaches to support learning and the needs of the surrounding region.

The Grand Opening of the new Engineering & Math Building this fall is projected to be fully occupied. This \$23.6M project will house engineering & physics labs, engineering/machine labs, math classrooms, testing and learning space. Frostburg University plans to deliver Bachelor's Degree programs in Engineering at this facility. Wilmington University and Salisbury University will also be hosting Bachelor's Degree programs at Cecil College.

New programs include Physical Therapy, Cyber Security, and Medical IT – meeting the challenges and needs of the growing industries.



I-95 & MD Rt 279 Interchange

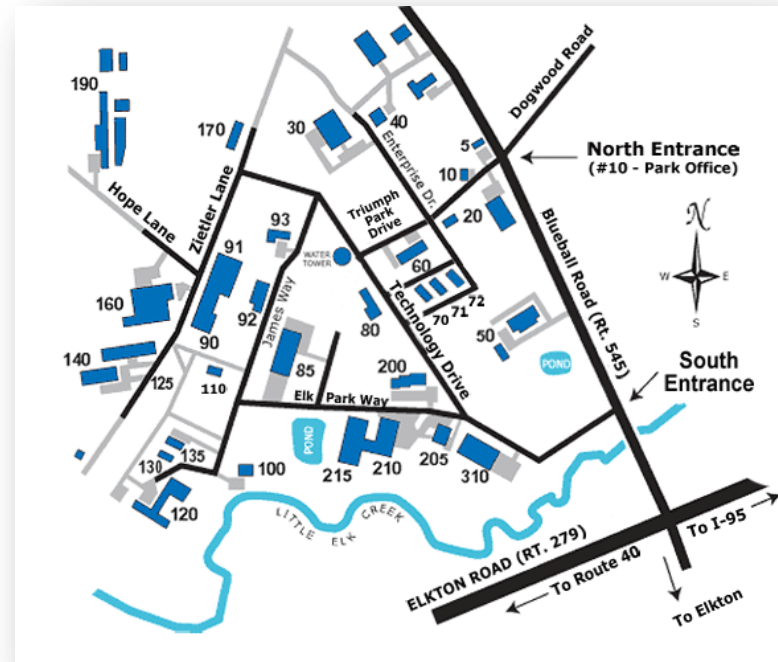
Exit 109

- **Elkton**
 - Rail
 - College / A&E District
 - Hospital
- **Upper Chesapeake Corporate Center**
 - Micropore, SSA, Flex
- **Triumph Industrial Park**
- **W.L. Gore Campus**
- **ATK, Terumo Medical**
- **Fair Hill Natural Resource Area**



Triumph Industrial Park

DuPont
Colonial Metals
Aquafin
Fluoron, Inc.
Mid-Atlantic Services
Maryland Cork
Liqui-Box Corporation



South of the Canal

- **Chesapeake City**
 - Tourism
 - B&B
 - Marine
- **Winbak Farm**
- **Select Breeders Services**
- **Riveredge, LLC / Hassler Dressage**
- **Warwick Mushroom**
- **Moon Nurseries**



Agriculture

- Cecil County is comprised of 222,824 acres (90,174 hectares)
- 70% of the land is rural and of that land, about 37% is active, working farmland
- Much of the agricultural land is devoted to cash grain and dairy farms
- Principal crops are corn, soybeans and wheat. Other crops include hay, barley, tree fruits, vegetables and berries
- Nanno beans are grown and exported to Japan, Non-GMO grains are exported to Europe
- Cecil County produced a total of \$95,789,000 in agricultural products sold. Of this amount, \$44,129,000 represent crop sales and \$51,660,000 represents livestock sales
- Growing winery industry – adding two to our Cecil County Wine Trail in 2014. Another new vineyard planted in recent weeks with a total of five vineyard / wineries in Cecil County

AG - Equine

- The County is well suited for raising horses and has several large Standardbred and Thoroughbred farms and many smaller farms producing horses for racing and pleasure.
- Several of the recent contenders in the major horse events (Kentucky Derby, the Preakness and the Belmont) were trained at Fair Hill Training Center; i.e., Barbaro, Animal Kingdom and Union Rags.
- The value of equine inventory in Cecil County is \$94,912,000, an increase of \$26,567,000 since 2002



Healthcare

Union Hospital – Top 100 Hospital

- The Medicare Excellence Award recipient from the Delmarva Foundation
- Certification from the Joint commission on Accreditation of Healthcare Organizations
- #1 focus is to provide exceptional quality patient care
- Pathway to Excellence (major step for Quality Nursing)
- Continued growth: state-of-the-art equipment, outpatient services, in-patient facilities, a new emergency department with a maternal and infant center
- Expanding Urgent Care facility in Perryville
- Partnership with West Cecil Health Center



Recreational Activities



- 220+ miles of shoreline
- 15,000 acres of state and local parks with hiking, biking, swimming, horseback riding, etc.
- Four championship golf courses
- 4,500+ boat slips
- 35 marinas on six waterways
- Museums, trails, fishing piers
- Local festivals
- World class, international equestrian events and steeplechase races

Economic Development

Office of Economic Development supports and advocates for the business community:

- Fast Track Permitting Assistance
- Site Selection Assistance
- Enterprise Zone providing real property tax and employee income tax credits
- VOLT Fund - Small Business Loans for women and minority owned businesses
- Revolving Loan Fund – to assist in purchase of land, building and equipment
- *Cecil Business First!* Program (Business Retention Program)
- Small Business Technology and Development Center (SBTDC)
- Workforce Assistance

Contacts

Lisa Webb, CEcD
Director, Cecil County Economic Development
lwebb@ccgov.org

Susan O'Neill, Economic Development Manager, soneill@ccgov.org

Jason Zang, Economic Development Coordinator, jzang@ccgov.org

Joanne Richart-Young, Agriculture Coordinator, jrichart@ccgov.org

Sandy Turner, Tourism Coordinator, sturner@ccgov.org

Cecil County Economic Development
200 Chesapeake Blvd., Suite 2700
Elkton, MD 21921
410-996-6292



www.cecilbusiness.org