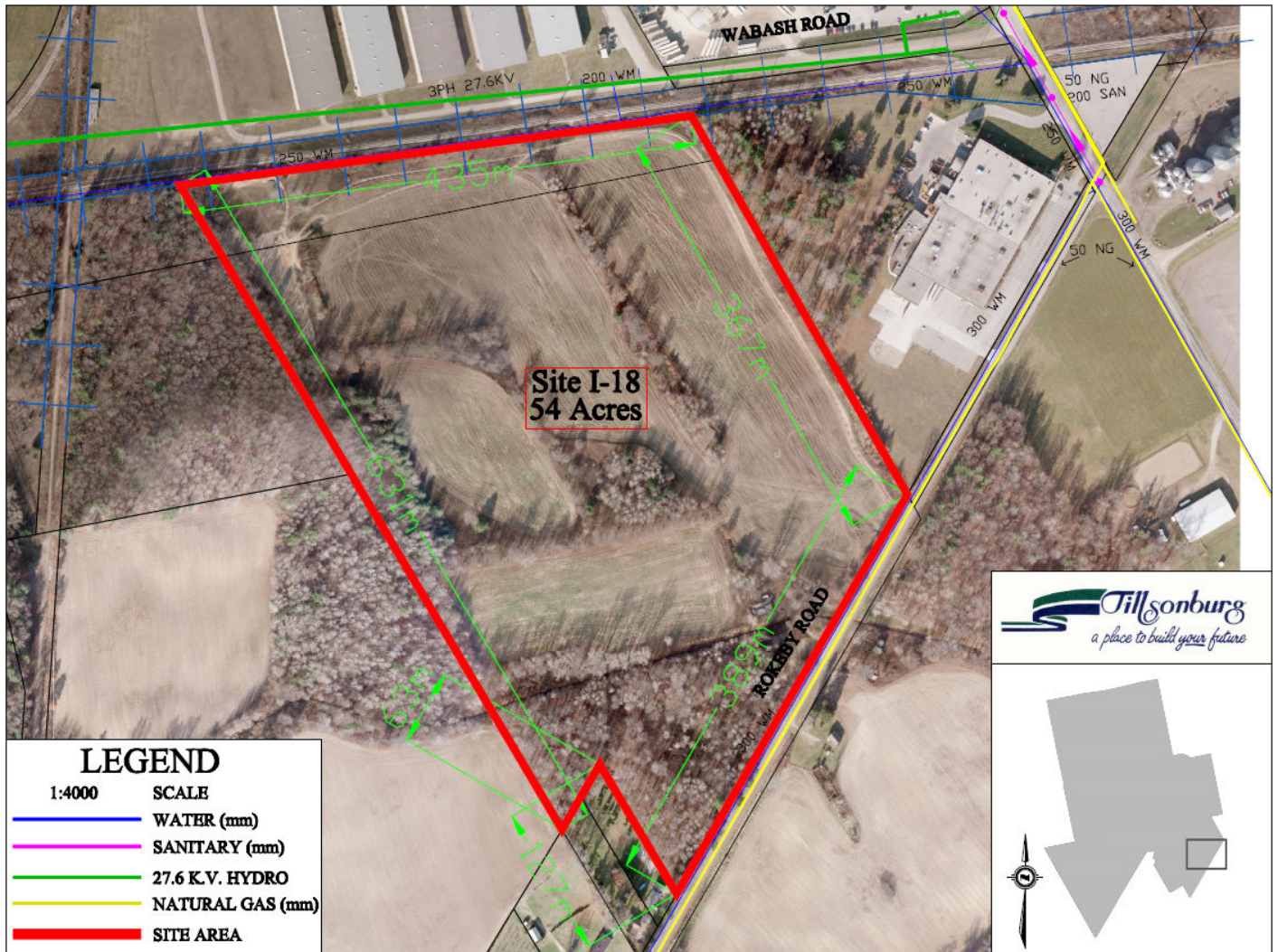


Tillsonburg Industrial Inventory - Site I-18



Site I-18	Owner/Contact Information	Property Information
Rokeby Road	<p>Cephas Panschow Development Commissioner Town of Tillsonburg 200 Broadway, 2nd Floor Tillsonburg, ON N4G 5A7</p> <p>Tel: (519) 842-6428 Ext. 3250 Cell: (519) 777-3175 Fax: (519) 842-9431 Email: cpanschow@tillsonburg.ca</p>	<p>Address: Rokeby Road, Tillsonburg, ON Location: North side of Rokeby Road Legal Description: Lot 1641, Plan 500 and Mid Con 4, NTR, Pt Lot 10 Zoning: General Industrial (MG) Current Use: Vacant land Acreage: 54 Acres, with approximately 40 acres developable Municipal Services? Water, hydro, gas. Sanitary sewer is in close proximity. Rail Access: Yes, both Trillium Railway (CN) and Ontario Southland Railway (CP) Possession: 30 days Price: \$20,000/acre</p>