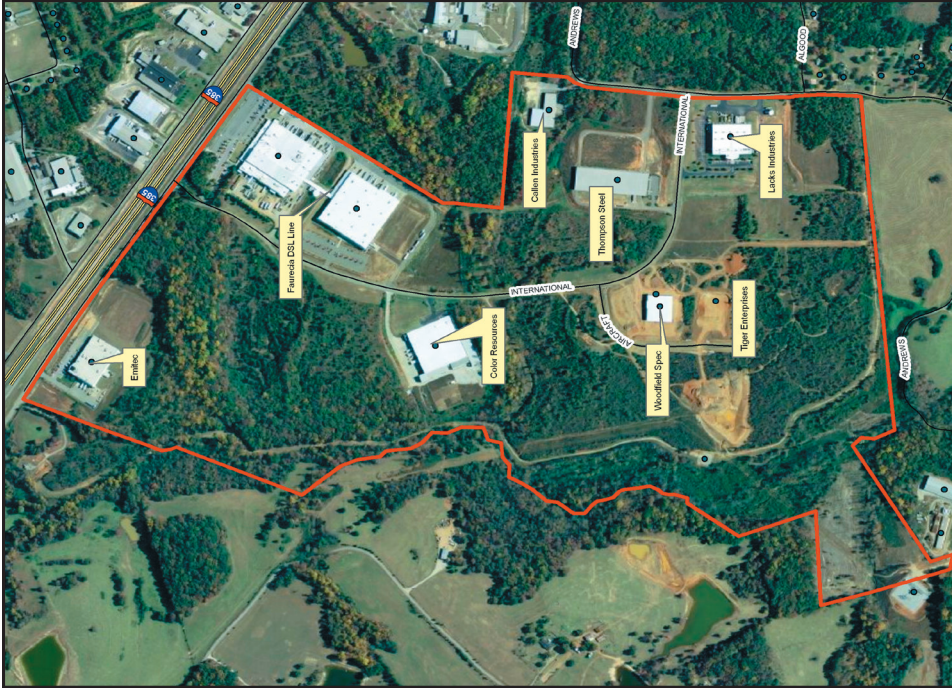


# WOODFIELD INDUSTRIAL PARK

Laurens, South Carolina

*ACCELERATING  
INDUSTRIAL  
PROGRESS...*

LAURENS COUNTY  
SOUTH CAROLINA



Toll Free: 866.548.9674

Direct: 864.939.0580

Fax: 864.939.0016

Mailing Address:

P.O. Box 427

Laurens, SC 29360

291 Professional Park Road

Clinton, SC 29325

## LOCATION & SPECIFICATIONS:

Location – I-385, 1.5 miles SE of I-385/SC14  
Foreign Trade Zone Status – No  
Multi-County Park Status – Yes  
Total Acres – 338.45  
Total Available Acres – 199.44  
Minimum Acres – 5  
Maximum Acres – 199.44  
Land Available Contiguous to Site – 42.37  
Current Land Use – Developing Industrial Park  
Surrounding Land Use – Industrial; Commercial  
Soil Type – Sandy Loam, Sandy Clay  
Range of Elevation (Ft Above MSL) – 230-250

## TRANSPORTATION & ACCESS:

Interstate – I-385, 0.5 miles, I-26, 12 miles  
Primary Airport – GSP International Airport, 18.8 miles  
Civil Airport – Donaldson Center, 16.2 miles  
Port – Charleston, 193.3  
Fire (Miles to Site) – 2.23  
Police (Miles to Site) – 2.80

## UTILITIES:

Electric Supplier – Laurens Electric / Duke Energy  
Natural Gas Supplier – Fountain Inn Natural Gas  
Size of Main – 2"  
Water Supplier – Greenville Water System  
Size of Main – 12"  
Sewer Supplier – Laurens County Water & Sewer  
Commission, 8"  
Sewer Type – Gravity; 8"  
Fire Protection Supplier – City of Fountain Inn  
Rating: – 5/9

## AVAILABILITY & SALE:

Price – \$20,000 - \$25,000 / acre  
Source – Laurens County Development Corporation

WWW.LAURENSCOUNTY.ORG