

Coble Globe Site Profile



Prepared by:

Greg Lowe

City of Lewisburg

Director of Economic Development

(931) 359-1544 – Office

(931) 993-7499 – Cell

greg.lowe@lewisburgtn.gov

www.lewisburgtn.gov

www.lewisburgtnecd.blogspot.com





Coble Globe Industrial Site

Table of Contents

Page 3	Letter of Welcome
Pages 4-5	Coble Globe Industrial Site Photos
Page 6	Coble Globe Industrial Site Data Sheet
Page 7	Coble Globe Industrial Site Utilities
Pages 8-9	Community Data

Mission Statement

The City of Lewisburg will be a center of industry and commerce for the southern middle Tennessee region. The Lewisburg Economic and Community Development Office will be a professional, active, efficient and effective partner with the State of Tennessee, Marshall County, industries, retail developers, its citizens, regional workforce and all related agencies whose goal is to encourage smart growth and economic well-being throughout the region.



Coble Globe Industrial Site

Welcome to Lewisburg, TN

We are very excited to tell you about an opportunity we have to offer in Lewisburg, TN.

The Coble Globe Industrial Site...

- ✓ **Is located 1 mile from Exit 32 on I-65**
- ✓ **Is less than 45 miles from Nashville International Airport**
- ✓ **Is less than 60 miles from Huntsville Intermodal Facility**
- ✓ **Has 50 acres of Developable Property**
- ✓ **Is priced at \$10,000/acre**
- ✓ **Has all Municipal Utilities and Telecom Ready to serve site**

This is your invitation to a promising partnership.

The City of Lewisburg...

- ✓ **Offers a (PILOT) Payment in Lieu of Taxes abatement incentive**
- ✓ **Is Ready to Hear and Negotiate All Requests**
- ✓ **Offers Assistance with Grants and Incentives from State and Federal Levels**
- ✓ **Offers Assistance with Training Programs locally and regionally**
- ✓ **Has Business-Friendly and Industry-Friendly City and County Leaders**
- ✓ **Has an available Workforce that includes 1,712 Marshall Co. workers and 15,571 Regional workers with Career Readiness Certification from the Tennessee Career Center**

We want you to join us on our odyssey toward future growth and prosperity in the region. We know what industry needs to thrive, as we have over 50 years of working with industries to become one of the largest industrial communities in the southern middle Tennessee region. We promise to work hand and hand with you to ensure your business succeeds.

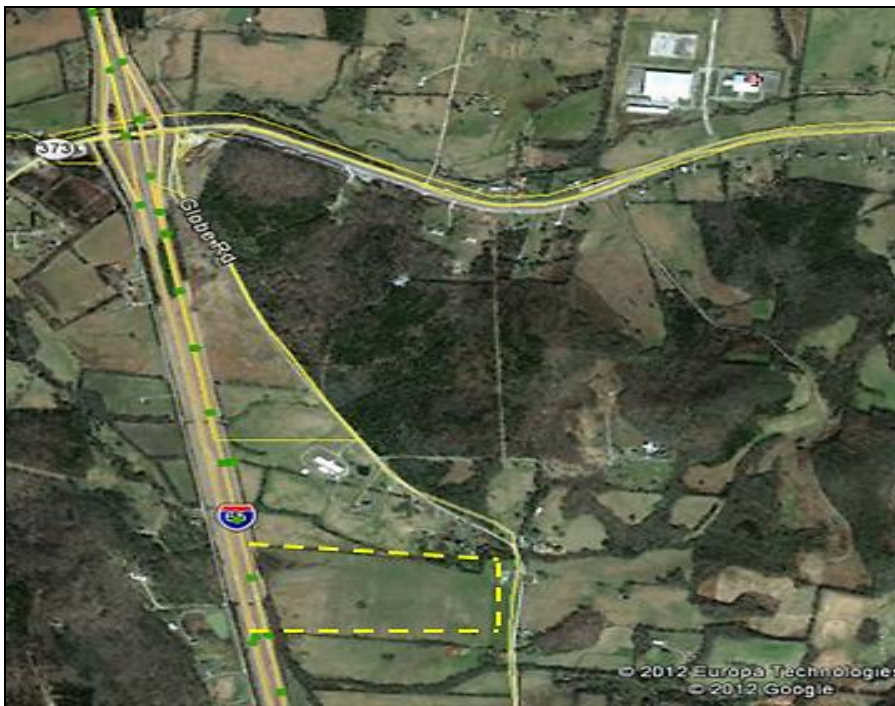
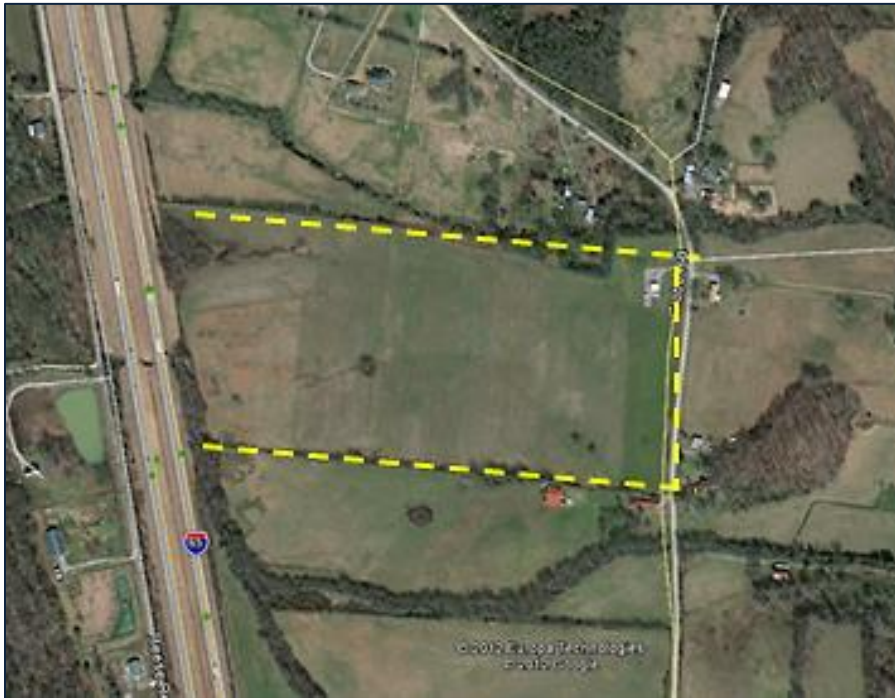
Sincerely,

Greg Lowe – Lewisburg Director of Economic Development



Coble Globe Industrial Site

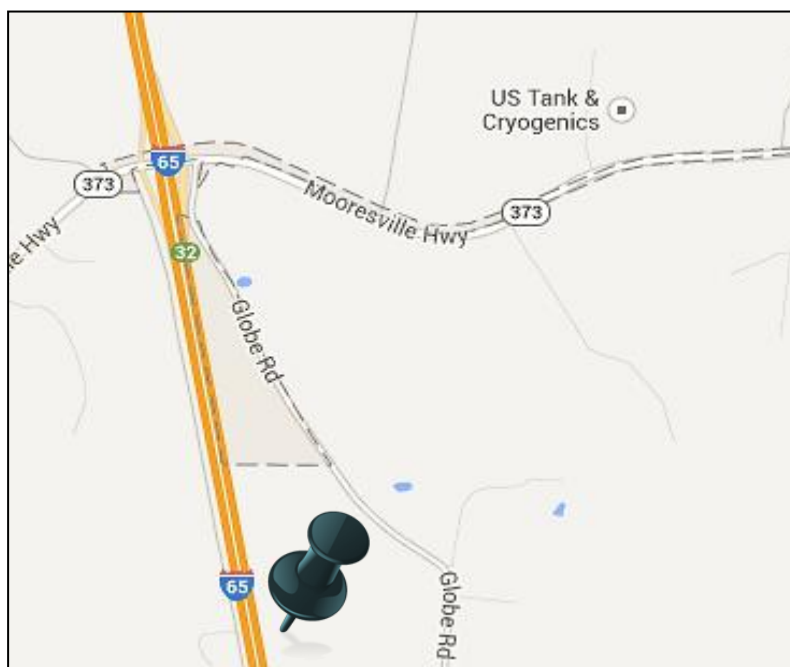
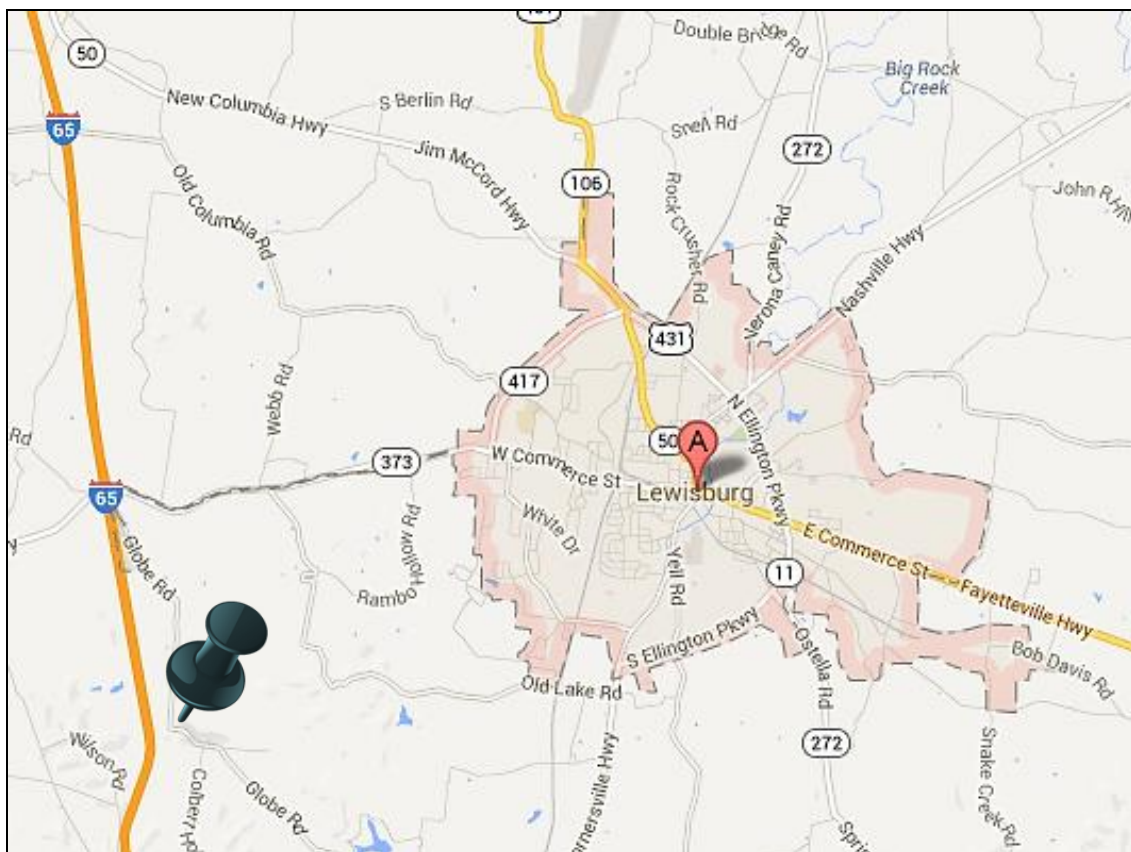
Site Details – Photos





Coble Globe Industrial Site

Site Details – Photos





Coble Globe Site

Site Details – Data Sheet

Address	Globe Road
City	Lewisburg
County	Marshall Co.
Latitude	35°25'55.91"N
Longitude	86°52'33.34"W
Tax Map	069 – 055.00 & 056.00
Ownership	Billy Coble
Land Price	\$10,000/acre
Site	50 acres available
Zone	Agricultural (County)
Flood Zone	0%
Terrain	Level
Phase I	No
Geo-Technical	No
Hydrological	No
Enterprise Zone	No
Free Trade Zone	No



Coble Globe Site

Site Details – Utilities

Duck River Electric System	
Voltage	Available as Needed
Substation	2 Miles from Site
Lewisburg Water	
Line Size	Available as Needed
Pressure	145 PSI
System Usage	2.8 MGD
System Capacity	4.0 MGD
Lewisburg Wastewater	
Line Size	Available as Needed
System Usage	2.2 MGD
System Capacity	3.0 MGD
Lewisburg Gas	
Line Size	Available as Needed
Pressure	17 PSI
AT&T	
Copper & Fiber	All services available upon request



Coble Globe Site

Community

- Marshall Co. School System Ranked Exemplary by State of Tennessee
- Three (3) Reward Schools Named in 2013
- 92% High School Graduation Rate
- MCHS Students Earned \$1.7M in Scholarships in 2013
- 350,000 Labor Force from Seven (7) Counties
- 24 Minute Average Drive-Time Worker Commute

“We have the best workforce of any facility I’ve been.”



Jeff Rogers –
Plant Manager

“This community has totally proven that our decision was the right one.”



Matt Jung– President

“Coming to Lewisburg was a remarkable decision for us.”



Paul DiGiovanni–
President

- Ellington Airport serving 80% business traffic in Lewisburg
- Lewisburg Department of Economic Development and Lewisburg Industrial Development Board supports local industry
- 54 industrial companies operating in Marshall Co.
- Manufacturer’s Association brings local industries together to share resources and information
- Active partnerships with State of Tennessee, the Tennessee Valley Authority and several regional agencies that support manufacturing in Tennessee

Location – Location – Lewisburg



Located on I-65 50 Miles
South of Nashville and
North of Huntsville, AL



Available Greenfield Sites
and Buildings in
I-65 Commerce Park and
Lewisburg Industrial Park



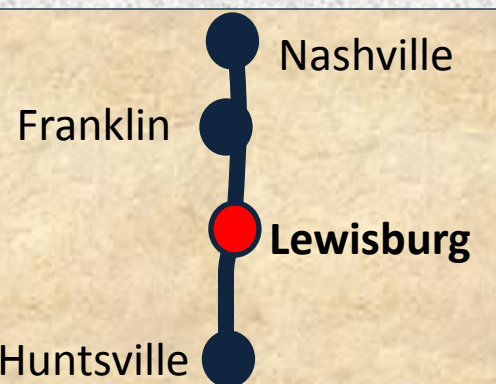
Four (4) Secondary and
Post-Secondary Training
Facilities and Columbia State
Community College



ThreeStar Community and
Tier III Enhancement County
designated by TN ECD



TVA Valley Sustainable
Community Silver Level



www.lewisburgtn.gov

(931) 359-1544

131 East Church St.
P.O. Box 1968
Lewisburg, TN 37091



Find Us On:

