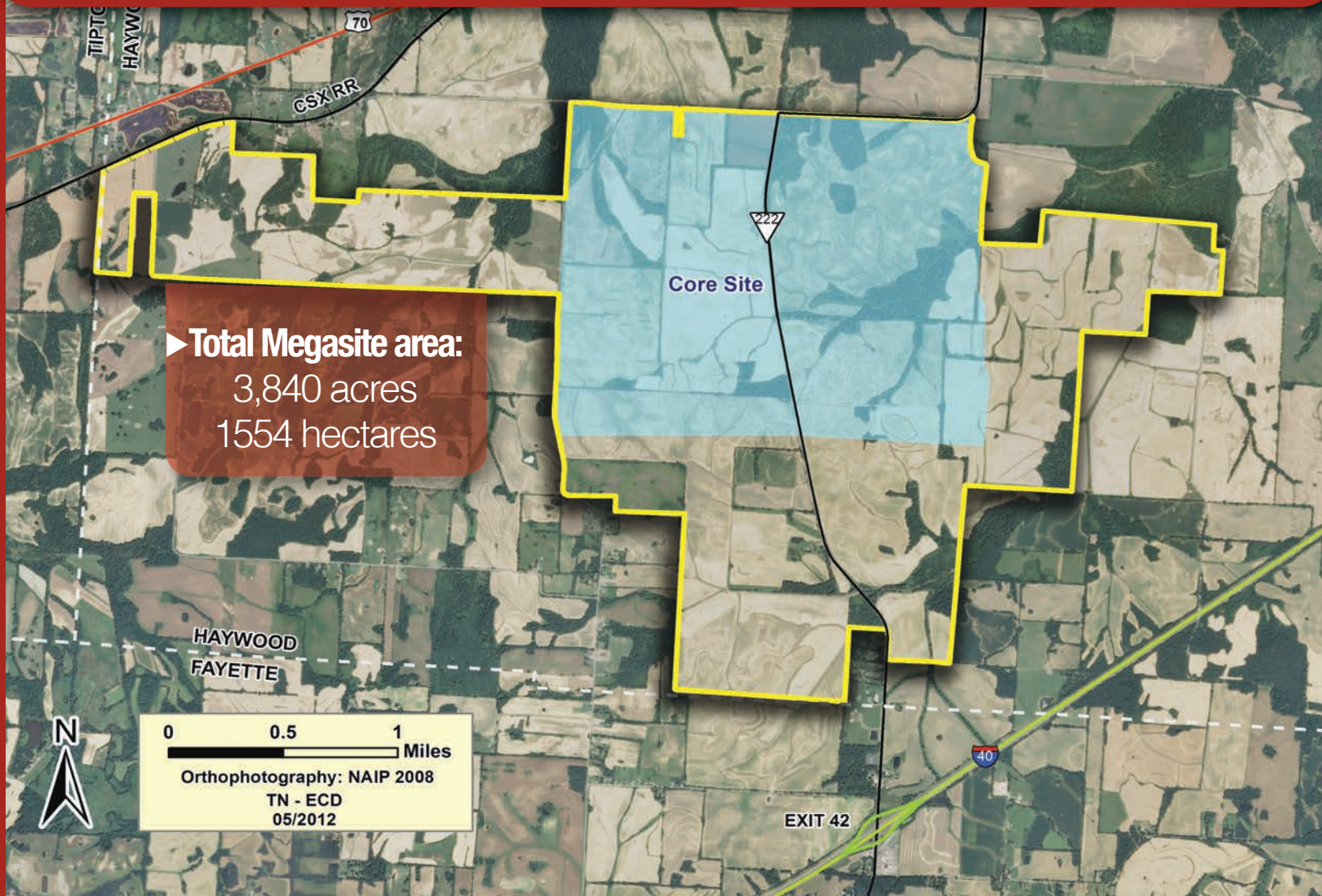


# MEMPHIS REGIONAL MEGASITE

[www.memphismegasite.com](http://www.memphismegasite.com)



The Memphis Regional Megasite consists of 3,840 contiguous acres, owned by the State of Tennessee, with a reserved, square-shaped, core site of 1,720 acres. The area's central location, strong transportation infrastructure, low costs of doing business and high quality work force provide an attractive setting for investments from around the world. For additional information regarding the site visit [www.memphismegasite.com](http://www.memphismegasite.com).

• Total Megasite area: 3,840 acres/1554 hectares	• Excellent soils
• Reserved, square-shaped, "Core Site": 1,720 acres/696 hectares	• Over 80% of the core site is unforested and cleared
• Immediately available	• Designated "Attainment" for 8-hour Ozone Standards & PM 2.5
• Excellent topography	• No endangered species
• All drainage begins on site	• No archeological impediments
• No flood zones	• No residents on site
• Low water tables	• Fast rezoning process
• Minimal wetlands	



Department of Economic and Community Development  
(615) 741-1888 or (877) 768-6374 [www.tn.gov/ecd](http://www.tn.gov/ecd)

Tennessee Department of Economic and Community Development, Authorization # 3301000 – 300 copies, August 2012. This public Document was promulgated at a cost of 5¢ per copy.