

ECONOMIC IMPACT STUDY

Blount County, Tennessee



Blount
Partnership

DIRECT BLOUNT PARTNERSHIP-INFLUENCED BLOUNT COUNTY JOBS AND OUTPUT

SECTOR	NUMBER OF FIRMS	FULL TIME EMPLOYEES	TOTAL ANNUAL COMPENSATION	AVERAGE ANNUAL COMPENSATION	ANNUAL COMPANY SALES DUE TO WORKER'S OUTPUT	TOTAL SALES OUTPUT
Business Services	15	3,266	\$190,000,000	\$58,181	\$133,224	\$435,100,000
Distributions	8	1,522	\$85,600,000	\$56,221	\$155,843	\$237,200,000
Manufacturing	40	9,301	\$732,400,000	\$78,747	\$369,799	\$3,439,500,000
Undisclosed	1	544	\$25,200,000	\$46,324	\$159,808	\$86,900,000
AVERAGES / TOTALS	64	14,633	\$1,033,200,000	\$63,951	\$818,674	\$4,198,700,000

SOURCE: Payroll supplied by companies recruited by Blount Partnership; Economic Impact modeling by Mark Burton, University of Tennessee Center for Transportation Research
The Blount Partnership has helped create employment of more than 14,600 full-time jobs with a total annual compensation of more than \$1 billion with an estimated annual sales total of \$4.2 billion.

REGION-WIDE ECONOMIC IMPACTS

ATTRIBUTABLE TO:	DIRECT EFFECTS (SUMMARY FROM TABLE 1)	INDIRECT AND INDUCED EFFECTS	TOTAL REGIONAL IMPACTS
Full-Time Employees	14,633	27,614	42,247
Employee Compensation	\$1,033,200,000	\$548,200,000	\$1,581,400,000
TOTAL SALES OUTPUT	\$4,198,700,000	\$5,075,500,000	\$9,274,200,000

SOURCE: Economic Impact modeling by Mark Burton, University of Tennessee Center for Transportation Research
The effects of the jobs, compensation and output from Blount County have generated economic activity that has broadened into a regional economy.

BLOUNT COUNTY PROPERTY TAX REVENUES

DESCRIPTION	VALUE
Appraised Property Values	\$256,617,700
Blount County (Real and Personal)	\$7,231,152
Municipal (Real and Personal)	\$5,714,665
TOTAL ATTRIBUTABLE PROPERTY TAXES	\$12,945,817

ESTIMATED REGION SALES & USE TAX REVENUES DERIVED FROM THESE ACTIVITIES

DESCRIPTION	VALUE
Local Option Sales and Use Collections	\$34,060,454
State Sales and Use Collections	\$13,380,893
TOTAL SALES AND USE COLLECTIONS	\$47,441,347

SOURCE: Taxes supplied by Blount County Property Assessor Tim Helton
The economic impact of recruited businesses and jobs created by the Blount Partnership have resulted in record-high receipts in property and sales taxes.

AVERAGE EARNINGS PER JOB: BLOUNT COUNTY

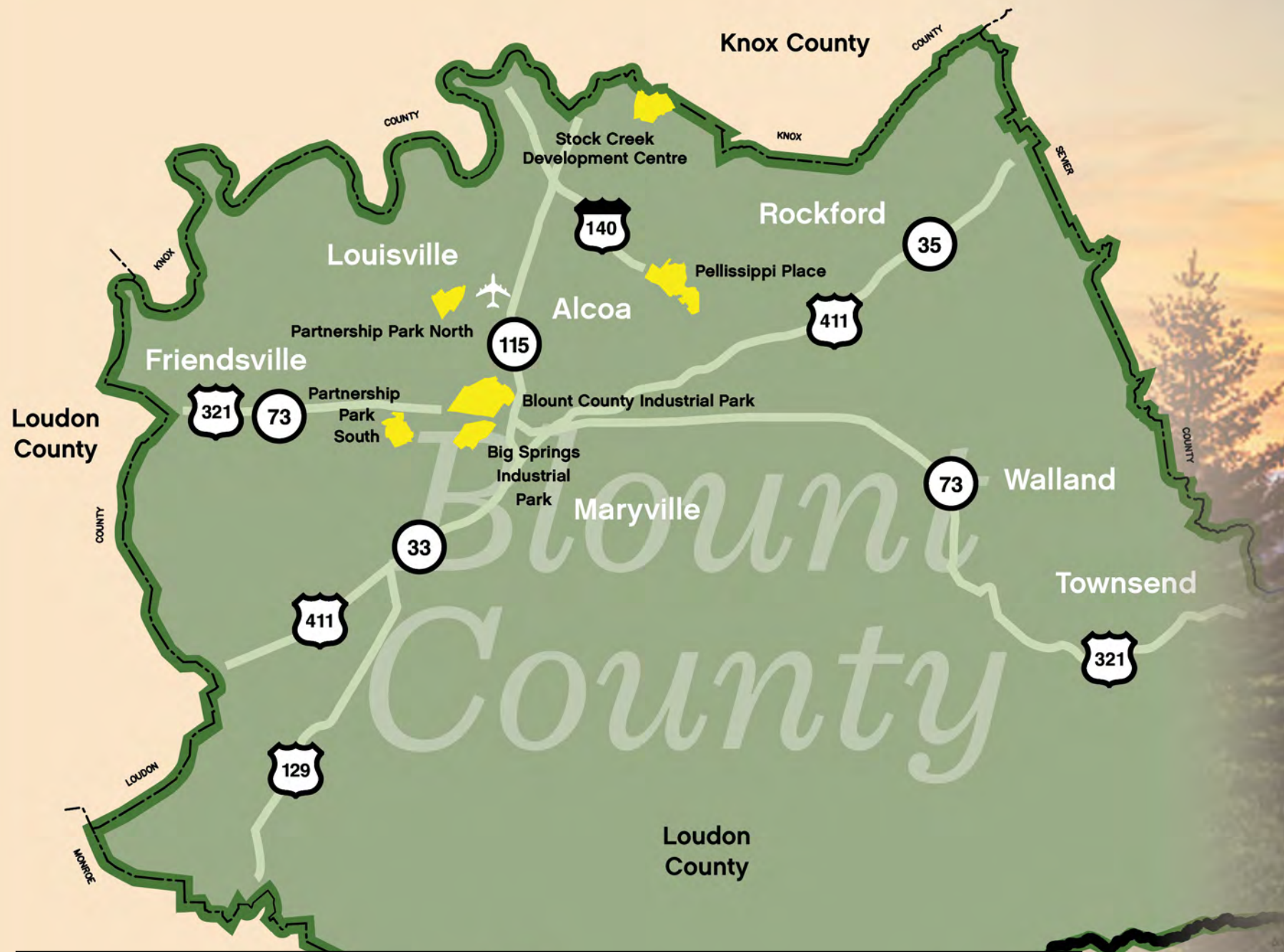
INDUSTRY	EARNINGS (THOUS \$)				JOBS (NUMBER)				AVG EARNINGS PER JOB (\$)				2010-13	
	2010	2011	2012	2013	2010	2011	2012	2013	2010	2011	2012	2013	%	CAGR
Nonfarm earnings	2,481,490	2,600,851	2,754,412	2,898,334	56,416	57,744	58,558	59,708	43,986	45,041	47,037	48,542	9.4%	3.8%
Private nonfarm earnings	2,067,543	2,176,852	2,315,137	2,435,559	48,157	49,661	50,548	51,481	42,933	43,834	45,801	47,310	9.3%	3.5%
Forestry, fishing, and related Activities and mining	3,387	3,372	3,753	3,999	171	174	193	203	19,807	19,379	19,446	19,700	-0.5%	-3.6%
Utilities	9,873	10,515	11,583	9,616	102	103	110	94	96,794	102,087	105,300	102,298	5.4%	4.1%
Construction	306,758	357,607	346,412	362,037	4,994	5,481	5,317	5,133	61,425	65,245	65,152	70,531	12.9%	4.7%
Manufacturing	426,959	433,822	480,636	515,767	5,824	5,988	6,354	6,770	73,310	72,449	75,643	76,184	3.8%	0.6%
Wholesale trade	140,887	137,774	137,047	138,607	1,967	2,047	1,978	2,094	71,625	67,305	69,286	66,192	-8.2%	4.5%
Retail trade	220,094	230,614	249,208	236,843	6,999	7,186	7,090	7,044	31,446	32,092	35,149	33,623	6.5%	1.2%
Transportation and warehousing	77,635	82,175	69,158	73,046	1,955	2,009	1,929	1,963	39,711	40,903	35,852	37,211	-6.7%	2.3%
Information	22,720	18,693	19,197	20,912	553	462	463	488	41,085	40,461	41,462	42,852	4.1%	5.7%
Finance and insurance	114,563	111,125	124,430	136,563	3,032	3,026	3,011	3,056	37,785	36,723	41,325	44,687	15.4%	5.4%
Real estate and rental and leasing	32,836	38,839	48,220	51,478	2,336	2,292	2,296	2,301	14,057	16,945	21,002	22,372	37.2%	3.9%
Professional, scientific, and Technical services	90,703	83,866	83,556	87,691	2,225	2,015	2,020	2,085	40,765	41,621	41,364	42,058	3.1%	4.9%
Management of companies And enterprises	56,786	59,136	65,404	108,219	928	1,018	915	1,144	61,192	58,090	71,480	94,597	35.3%	3.1%
Administrative and waste Management services	72,804	87,057	99,865	112,058	3,199	3,370	3,799	4,090	22,758	25,833	26,287	27,398	16.9%	5.4%
Educational services	29,276	27,051	27,129	27,520	951	886	877	855	30,784	30,532	30,934	32,187	4.4%	5.7%
Health care and social assistance	202,744	215,071	220,696	211,710	4,377	4,565	4,338	4,093	46,320	47,113	50,875	51,725	10.4%	6.9%
Arts, entertainment, and recreation	8,085	8,634	9,882	9,450	787	869	865	854	10,273	9,936	11,424	11,066	7.2%	3.4%
Accommodation and food services	124,137	128,830	146,912	152,391	4,014	4,291	4,893	5,108	30,926	30,023	30,025	29,834	-3.7%	5.4%
Other services, except public Administration	127,296	142,671	172,049	177,652	3,743	3,879	4,100	4,106	34,009	36,780	41,963	43,266	21.4%	7.3%
Government and government Enterprises	413,947	423,999	439,275	462,775	8,259	8,083	8,010	8,227	50,121	52,456	54,841	56,251	10.9%	5.8%
TOTAL MINUS:														
Nat res & mining; mgf.; Wholesale trade	1,910,257	2,025,883	2,132,976	2,239,961	48,454	49,535	50,033	50,641	39,424	40,898	42,631	44,232	10.9%	4.7%

SOURCE: Data provided by University of Tennessee Center for Business & Economic Research



In addition to the businesses listed on the following pages, the Blount Partnership also worked with numerous other companies on their locations. Most recently, Cirrus Aircraft expanded into Tennessee with its new Cirrus Customer Experience Center, called the ‘Vision Center,’ to be located at the McGhee Tyson Airport. The Vision Center will be the location for factory direct type rating training from Cirrus Aircraft. That brought in 170 jobs with a \$15 million investment. Likewise, K12, Inc. opened its family support center in the Tyson Centre Building located next to McGhee Tyson Airport, bringing with it 300 jobs and \$2.4 million capital investment. Additionally, Alcoa Inc. Tennessee Operations expanded its production into the recyclable aluminum sheet for automotive production with 200 additional jobs and a \$300 million investment. Just a few of the many other businesses locating or expanding include Accenture, Everbrite, TeamHealth and Royal Metal Powders.

Blount County has evolved into a major regional employer. It provides jobs for Blount, Anderson, Knox, Loudon, and Sevier Counties.



TOTAL ECONOMIC IMPACT CREATED BY THE BLOUNT PARTNERSHIP

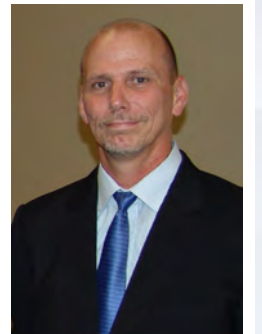
JOBS		INCOME	
Direct Jobs Created by EDB	14,633	Income created by EDB	\$1,033,200,000
Ripple Effect Jobs by EDB	27,614	Ripple Effect Income by EDB	\$548,200,000
TOTAL JOBS BY EDB	42,247	TOTAL INCOME BY EDB	\$1,581,400,000



Todd Simmons
*President,
Customer Experience
Cirrus Aircraft*

"Cirrus Aircraft chose Blount County and the McGhee Tyson airport for the location of our global customer experience center, The Vision Center, after a search of over 30 locations around the country. Key considerations were real public-private partnership opportunities, access to world-class education and technology resources, unique geographic and cultural amenities and a welcoming community for the large number of our employees relocating to the area. 'Comprehensive' best describes the relationship as Blount County won on all counts and was just as instrumental in guiding Cirrus to access local development support for the initial Vision Center campus construction. Today the partnership is just as strong, if not stronger, than it was during the very earliest stages and as the best-selling personal airplane in the world for nearly 14 years in a row, we are very proud to call Blount County and East Tennessee our new home."

"The Blount Partnership assisted in efforts to locate DENSO in Blount County and they have continued to work diligently to help us grow. Their keen understanding of business needs and challenges enables the Blount Partnership to advocate for and provide direct support to businesses of all sizes. Its ability to be responsive in a timely manner has allowed our community to grow without minimizing services and the quality of life we enjoy. The Economic Development Board also works tirelessly to maintain a balance of servicing existing businesses while recruiting new ones. DENSO Manufacturing Tennessee is proud to be a member of the Blount Partnership and looks forward to many years of continued cooperation and success."



Mike Brackett
*Senior Vice President and Treasurer
DENSO Manufacturing Tennessee, Inc.*



Joe Matteo
*Division President for R & D and Manufacturing
ProNova Solutions*

"ProNova chose to locate in Pellissippi Place for a number of reasons that, when combined, made the decision easy. The location is convenient to the airport, Oak Ridge National Laboratory, University of Tennessee and Knoxville including the Provision Proton Center. Pellissippi Place's modern look and feel and outdoor amenities along with the long range plan for a progressive commercial park were also attractive. Above all, we were most impressed with the Blount Partnership, its willingness to meet our needs, and the genuine community support. I am happy to say that our expectations have been exceeded and we are extremely pleased to be located in Pellissippi Place. The community continues to support us strongly and we as a company and our employees have enjoyed getting more involved."

PARTNERSHIP PARK NORTH

General

Land Area: 237 Acres

Tenants

Python Meteor Holding

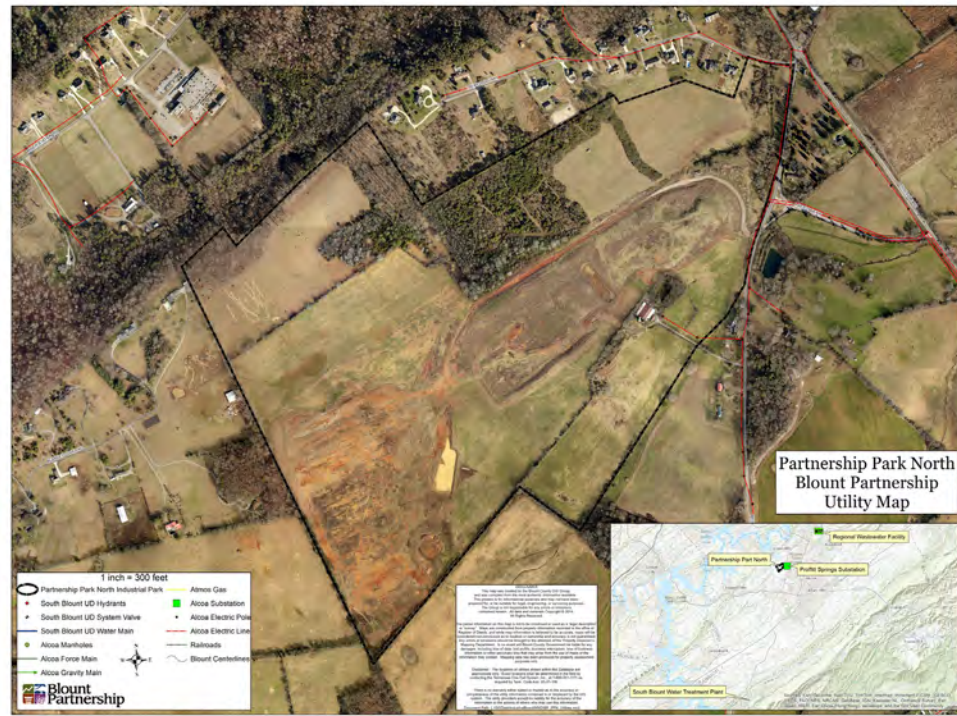
Utilities

Gas: Atmos Energy

Water: South Blount Utilities District

Electric: Alcoa Utilities Board

Sewer: Alcoa Utilities Board



PELLISSIPPI PLACE

General

Land Area: 450 Acres

Tenant

ProNova Solutions

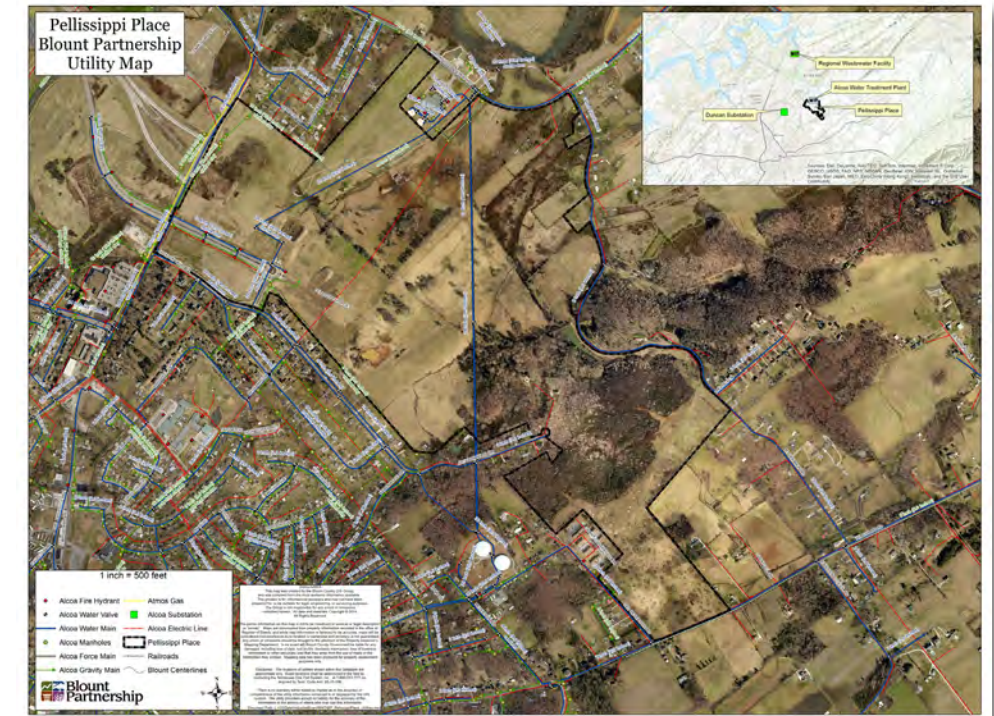
Utilities

Gas: Atmos Energy

Water: Alcoa Utilities Board

Electric: Alcoa Utilities Board

Sewer: Alcoa Electric



PARTNERSHIP PARK SOUTH

General

Land Area: 256 Acres

Tenants

Advanced Catalyst Systems

Aircel Corporation, LLC

Promat

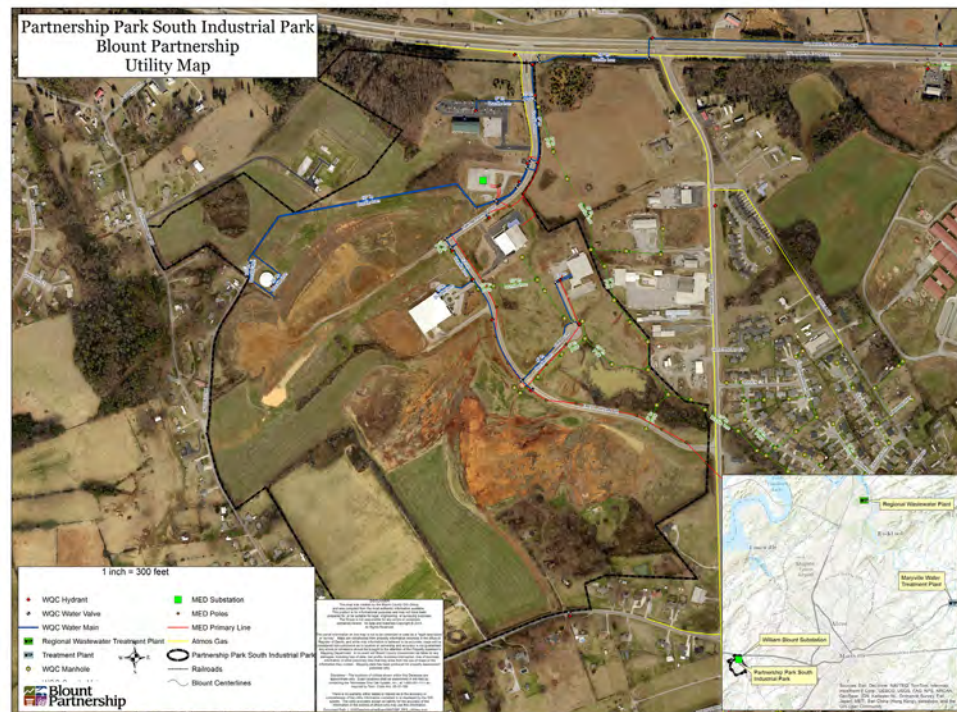
Utilities

Gas: Atmos Energy

Water: Maryville Utilities Board

Electric: Maryville Electric

Sewer: Maryville Utilities Board



STOCK CREEK BUSINESS PARK

General

Land Area: 350 Acres

Tenants

Aesseal, Inc.
Axis Fabrication and Machine Co, LLC
Brozelco, Inc.
Cintas
Cooper-Standard Rockford Inc. - USI
Cruze Computer Systems
Koide TN, Inc.
NISUS Corp.
Remote Area Medical
SASE
SIEMENS Crystal Detector Materials
Siemens Advanced Detection
Southern Impact Research Center
Specmat Technologies Inc.
Townsend Surgical
Universal Sanitizers & Supplies, Inc.,
/ BCN Research

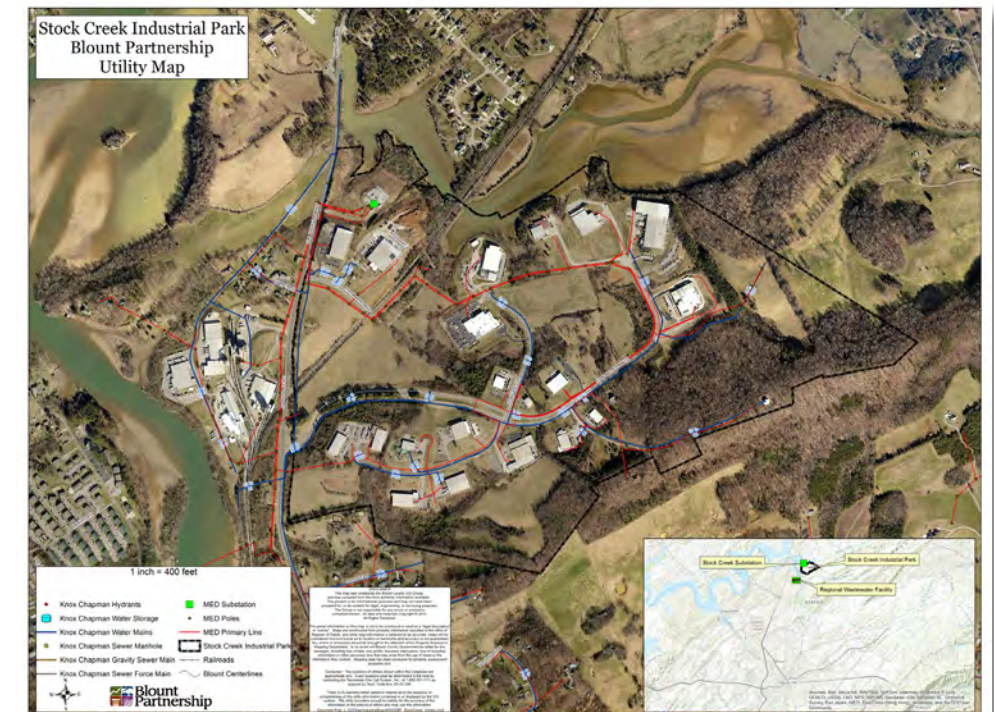
Utilities

Gas: Atmos Energy

Water: Knox-Chapman Utility District

Electric: Maryville Utilities Board & Knox Utilities Board Served by two Sub Stations

Sewer: Direct line to regional waste water treatment



BLOUNT COUNTY INDUSTRIAL PARK

General

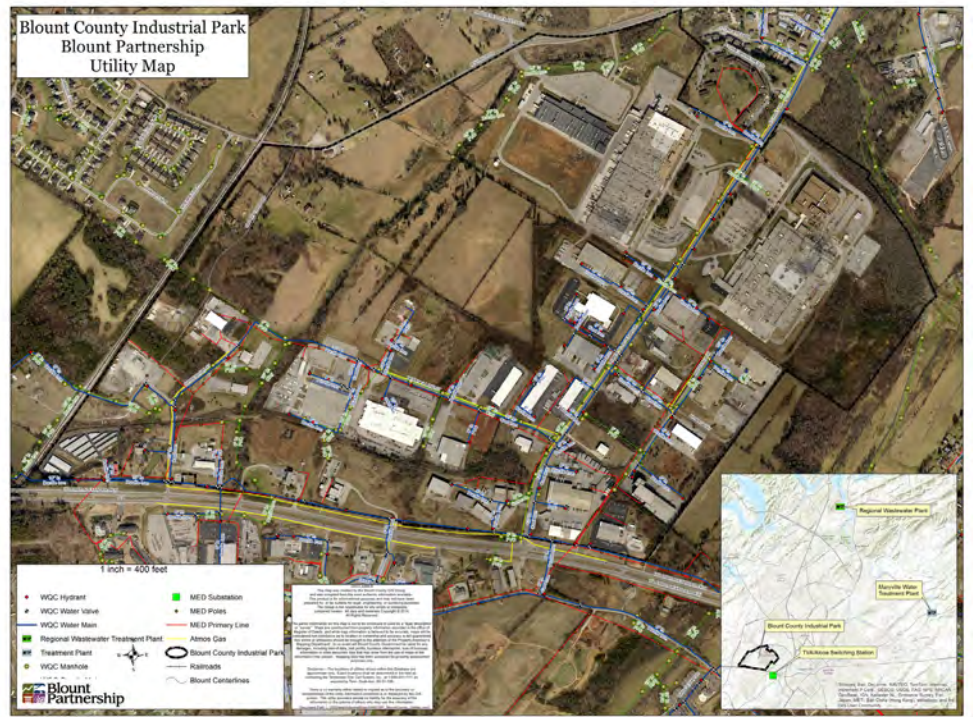
Land Area: 400 Acres

Tenants

American Continental Techlab, Inc.
Atas International, Inc.
Atmos Energy
Boatmate Trailers, Inc.
Braden's Distribution Center
Charter Communications
DENSO Manufacturing Tennessee, Inc.
Derby Distribution Center
First Tennessee Regional Operation Ctr.
Hurst Tool & Stamping
Industrial Commutator Corporation Int.
Macawber Engineering Company, Inc.
Marine Accessories Corp.
Meiji Corporation
NEO Industries, Inc.
Robertshaw Industries, Inc.
Signet Plastics
Skier's Choice
Spradling International Marine
Surface Igniter
Toyota Tsusho America, Inc.
UPS

Utilities

Gas: Atmos Energy **Electric:** Maryville Utilities Board **Water:** Maryville Utilities Board **Sewer:** Maryville Utilities Board



BIG SPRINGS INDUSTRIAL PARK

General

Land Area: 260 Acres

Tenants

Cherokee Millwright & Mechanical
Chroma Graphics Inc.
DCS Electronics and Fab Shop, Inc.
DenTek Oral Care, Inc.
International Transmission & Bearings, Inc.
Hoosier Tires
Standard Aero Alliance, Inc.

Utilities

Gas: Atmos Energy
Water: Maryville Utilities Board
Electric: Maryville Utilities Board
Sewer: Maryville Utilities Board

