

DFW Metroplex & Weatherford

Weatherford ★ TX

Weatherford

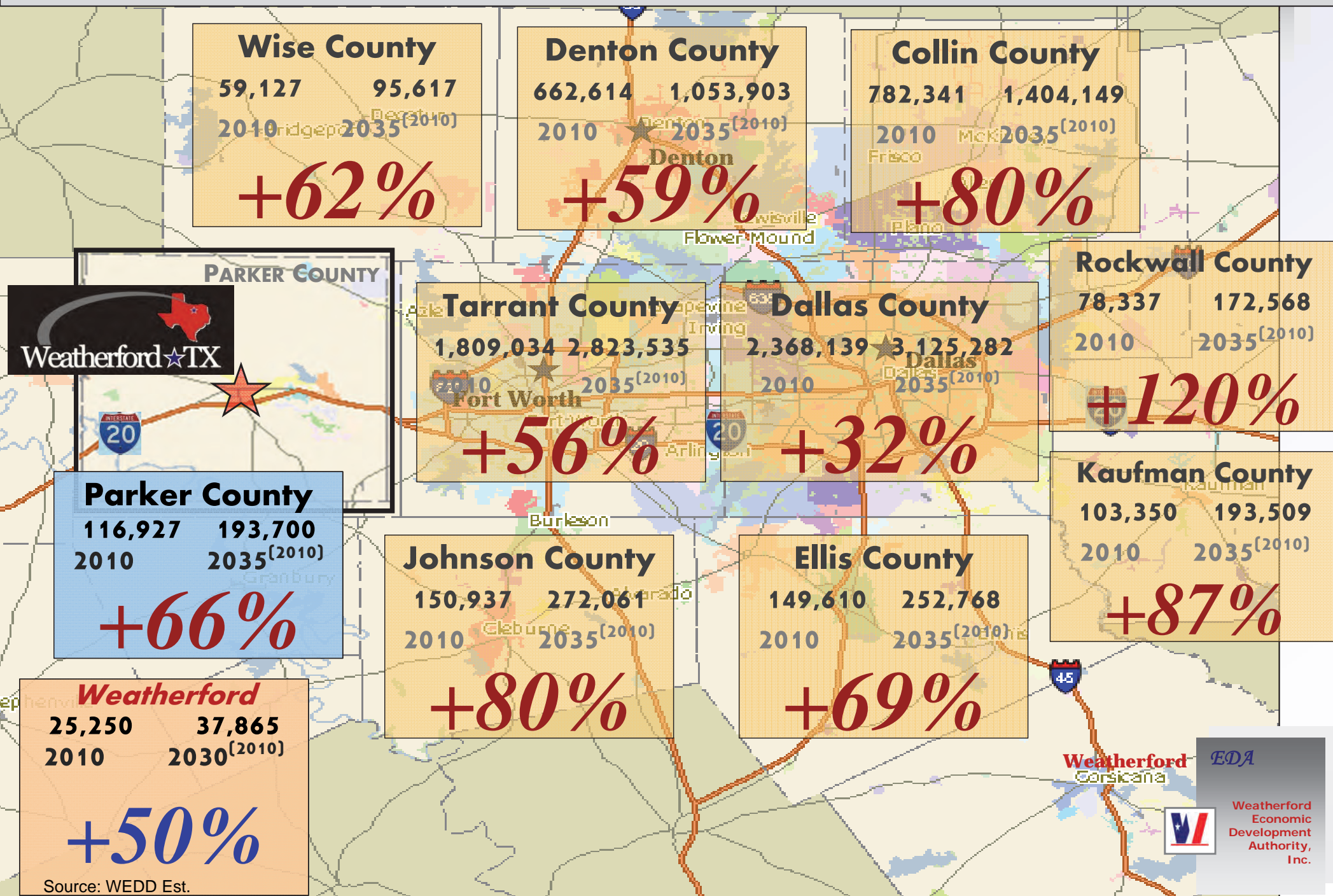
Weatherford, TX – “The Western Gateway Business Centre of the DFW Metroplex”



DFW Metroplex Growth of all Adjacent Counties

Projected Household Population Change – 2010 to 2035

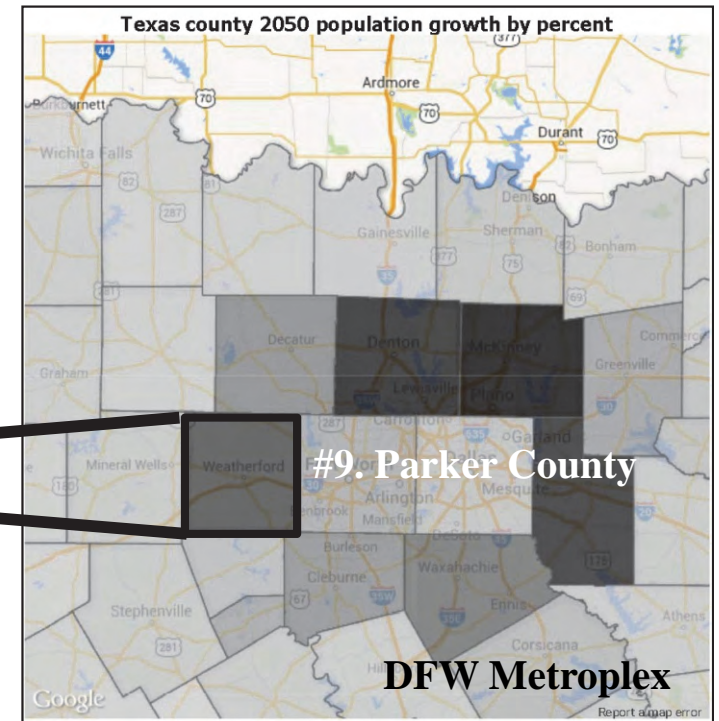
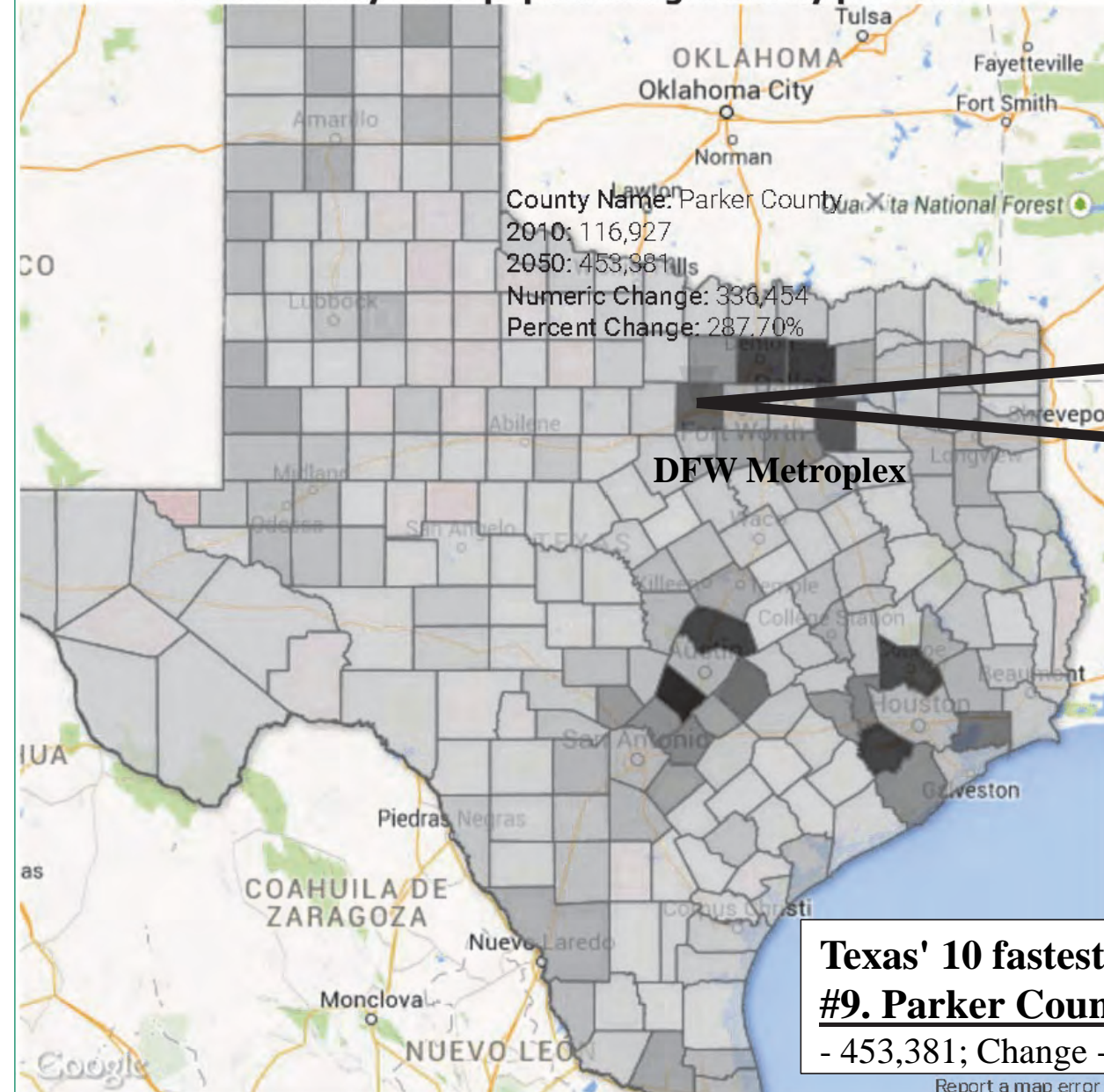
Source: NCTCOG 2040 Demographic Forecast [from 2010 US Census]/ WEDD Est. & calculations



Map: Texas suburbs, not cities, to grow the fastest by 2050; one Central Texas county will top them all.

Source: Dallas Business Journal 03.10.15

Texas county 2050 population growth by percent



Texas' 10 fastest growing counties by 2050 (Percent):
#9. Parker County; 2010 population - 116,927; 2050 population - 453,381; Change - 336,454; Percent change - 287.70%

April 2014:

- ❖ 15 mile ring/65% catchment
- ❖ 96,855 2013 - population
- ❖ \$71,536 Median HH income

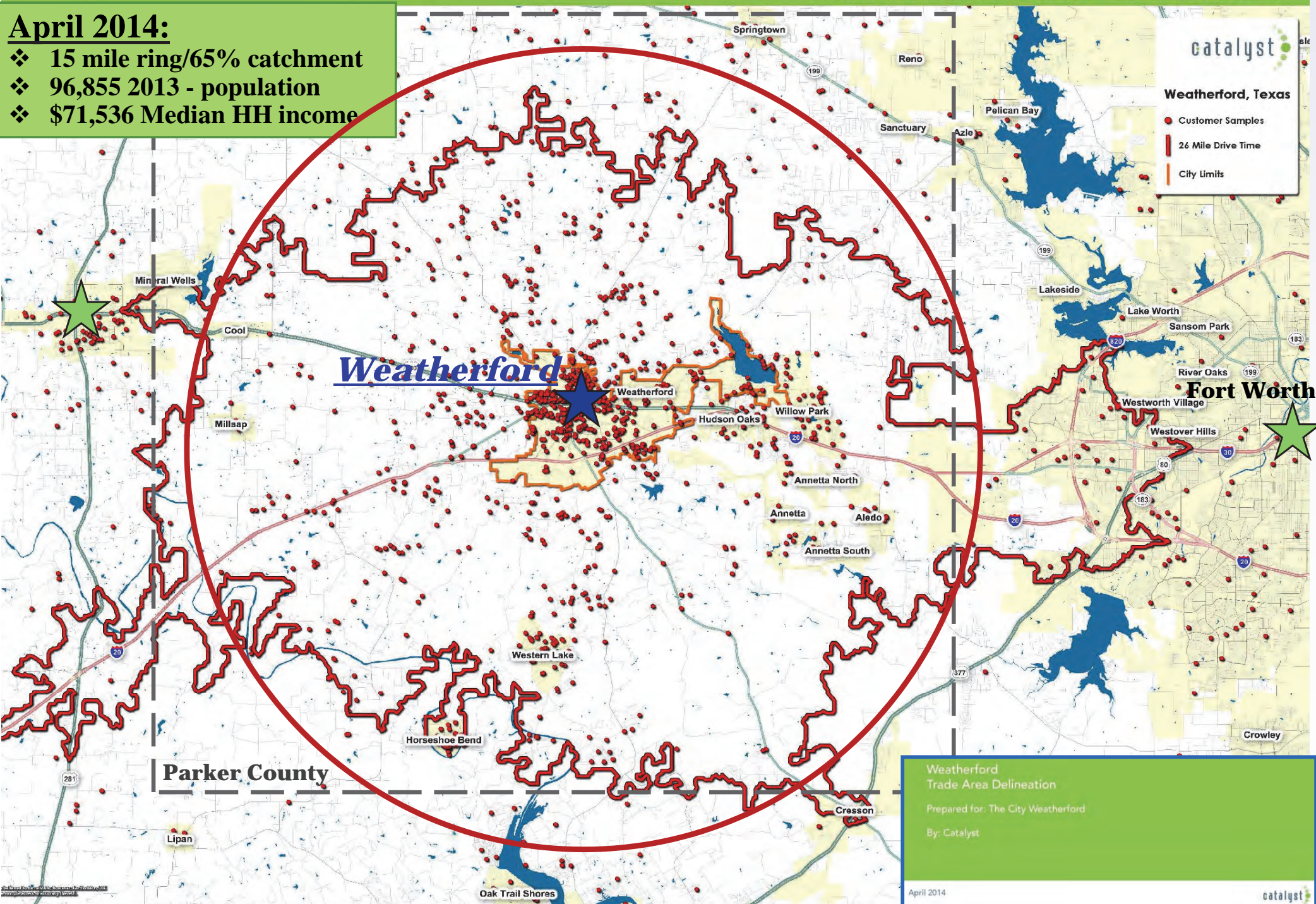
catalyst

Weatherford, Texas

● Customer Samples

■ 26 Mile Drive Time

■ City Limits

Weatherford
Trade Area Delineation

Prepared for: The City Weatherford

By: Catalyst

April 2014

catalyst

April 2014:

- ❖ 26 mile ring/85% catchment
- ❖ 174,109 (ESRI est.) 2013-population
- ❖ \$64,842 Avg. HH Income/ \$52,895 Median HH income
- - - Primary Drive Time TA: 15 mile-ring/65% catchment

