

# Industrial/Business Parks

## Weatherford, Texas



FM 920 to  
Bridgeport

W/PC EDC Hobson Industrial Park:  
Lots for BTS.



RWMH West Loop

FM 920 (W. 4th St.)

FM 51 to Springtown, & Decatur

Future East Loop

FUTURE East Loop:

- Est. Start ~ 2016
- Est. Complete ~ 2025 (1- years)



FM 730/Azle Hwy

U.S. 180 to Mineral Wells

City- County Government

WEATHERFORD CBD/Historic Downtown

25 mi to Fort Worth

U.S. 180/Fort Worth Hwy

U.S. 180 to Fort Worth & IH 20

Medical, Financial &  
Government Centers

E. Bankhead Dr.

Tx Hwy Spur 321 Ranger Highway

**Weatherford West**  
103 Acres +/- Commercial  
Warehouse on 3.5 acres +/- also available  
Jeff Clark, Ranger Realty  
254-433-2561

Weatherford College

Santa Fe Dr.

Exit  
410

(future)  
Exit  
411

E. Bankhead Industrial  
Park

Exit  
409

Regional Retail Center

Hwy 171/FM 51 to Cleburne & Granbury

WISD High School

Exit  
406

Exit  
408

(new)  
Exit  
405

Weatherford Corporate Center – 14 & 5.8 acres.

WEATHERFORD  
CORPORATE CENTER  
500 Bethel Road & BB Fielder Road  
Weatherford, Texas

This information is deemed to be  
from a reliable source, but is not  
warranted in any way by the  
Weatherford Economic Development  
Authority, Inc.



200 FT R.O.W. RWMH  
West Loop

Provimi North American  
Nutrition (Animal Food  
Supplements)

Union Pacific main Line  
& Sidings

• **Sale Price:** (subject to change at anytime)  
1) Interior lots - \$45,000/Acre (\$1.04/SF)  
2) Highway frontage, Loop frontage, corner  
/intersection lots – asking \$3.00/SF

- Heavy Industrial Zoning – HI
- City Water, Sewer & Electric Service
- Paved and C&G Streets
- Fire Protection

JAMAK Fabrications  
(Silicone Rubber molding)

Weatherford/Parker County Economic Development Corporation  
**Hobson Industrial Park – Phase II**  
1100 Block of Peaster Highway (F.M. 920)  
Weatherford, Texas



Power Service Products #1  
(Diesel Fuel additives)

Power Service Products #2  
(Diesel Fuel additives) – 100K  
SF UNDER Constr. – 18.001 ac

4.85+/- ac.)

3.25+/- ac.)

2.475 Acres

5.83 ac. – SOLD!  
(FOR RE-SALE)

**BURETTE HOBSON  
INDUSTRIAL PARK**

entrance

approx. 12.7 +/- ac.

11.02 +/- A. gross,

5.33 acres  
gross

**FOR SALE!** - 12K SF/  
5 ac. - Oil Field  
Services Training Cntr.



**WATER &  
WASTEWATER**  
City of Weatherford

**ELECTRIC**  
Weatherford Electric & TXU

**WHOLESALE  
SUPPLIER**  
AEP

**NATURAL GAS**  
Texas Gas Co./Oneok

**TELECOMMUNICATIONS**  
AT&T – Local, Long Distance,  
Cellular & Internet

### TRANSPORTATION

**RAILROADS**  
Daily Service:  
Union Pacific Railroad Co.  
switching ..... yes

**MOTOR FREIGHT**  
More than forty-three  
carriers plus many  
independents currently  
serve the City of Weatherford

**COMMERCIAL AIR**  
DFW International Airport  
(distance - 52 miles)  
Alliance Airport  
(distance - 45 miles)

**GENERAL AVIATION  
AIRPORT** -  
(distance - 19 miles)





This information is deemed to be from a reliable source, but is not warranted in any way by the Weatherford Economic Development Authority, Inc.

- Property Line
- Example Line
- Drainage (Flood Plain)
- Easement Line
- UP Siding & IP

Available "COMMERCIAL" Lots!  
Corner & Frontage

AVAILABLE Lots!  
Will subdivide.

RWMH West Loop

FM 920 (Peaster Hwy.)

(approx.  
3.25+/- ac.)

(approx.  
4.85+/- ac.)

~2.475 +/- ac.)

5.83 ac. - SOLD!  
(FOR RE-SALE  
By Owner)

approx. 12.7 +/- ac.

(6.8 a. gross Lot  
/4.53 a. net)

11.2+/- acres gross (Blk  
A, Lot 1RA)

Wireline E&P (Schlumberger Int'l)  
(12,000 SF/ 5 ac. Oil Field Training Cntr)

**FOR SALE!**

N. Gas Services

Provimi North American Nutrition  
(Animal Food Supplements)

Power Service Products #2  
(Diesel Fuel additives) - 100K  
SF UNDER Constr. - 18.001 ac

5.33 ac. gross  
(Blk A, Lot 1RB)  
[Approx. 3 acres Net]

Power Service Products #1  
(Diesel Fuel additives)

JAMAK Fabrications (Int'l)  
(Silicone Rubber Molding)

Heritage Plastics  
(PVC Conduit Extrusions)



**Weatherford/Parker County Economic Development Corp.**  
**Available Lots! - Hobson Industrial Park**  
1100 Block of Peaster Highway (F.M. 920)  
Weatherford, Texas

U.P. RR & Siding

Approx. Drainage Easement (Flood Plain)

N. Bowie Dr.

This information is deemed to be from a reliable source, but is not warranted in any way by the Weatherford Economic Development Authority, Inc.

- Property Line
- Example Line
- Drainage (Flood Plain)
- Easement Line
- UP Siding & IP Spurs

Lots SOLD since 2006

**FOR SALE!**

Wireline E&P (Schlumberger Int'l)  
(12,000 SF/5 ac. Oil Field Training Cntr)

N. Gas Services

Power Service Products #1  
(Diesel Fuel additives)

JAMAK Fabrications (Int'l)  
(Silicone Rubber Molding)

Heritage Plastics  
(PVC Conduit Extrusion)

Power Service Products #2  
(Diesel Fuel additives) – 100K SF UNDER  
Constr. – 18.001 ac

Provimi North American Nutrition  
(Animal Food Supplements)

**Weatherford/Parker County Economic Development Corp.**  
**Available Lots! - Hobson Industrial Park**  
1100 Block of Peaster Highway (F.M. 920)  
Weatherford, Texas



U.P. RR & Siding

SOLD 1996!  
11.28 ac.

SOLD!  
6.06 ac.

SOLD!  
11.55 ac.

5.33 acres gross  
(Blk A, Lot 1RB)  
[Approx. 3 acres Net]

11.2+/- acres gross  
(Blk A, Lot 1RA)

5.0 ac.

SOLD!  
5.83 ac.

(~2.475 +/- ac.)

approx. 12.7 +/- ac.  
(6.8 a. gross Lot  
/4.53 a. net)

SOLD!  
8.357 ac.

(approx.  
4.85+/- ac.)

(approx.  
3.25+/- ac.)

RWMH West Loop

Approx. Drainage  
Easement (Flood Plain)





**WEATHERFORD  
CORPORATE CENTER**

SEQ Bethel Road & BB Fielder Road  
Weatherford, Texas



*Vicinity Aerial - City Of Weatherford*

This information is deemed to be from a reliable source, but is not warranted in any way by the Weatherford Economic Development Authority, Inc.



# WEATHERFORD CORPORATE CENTER

SEQ Bethel Road & BB Fielder Road  
Weatherford, Texas

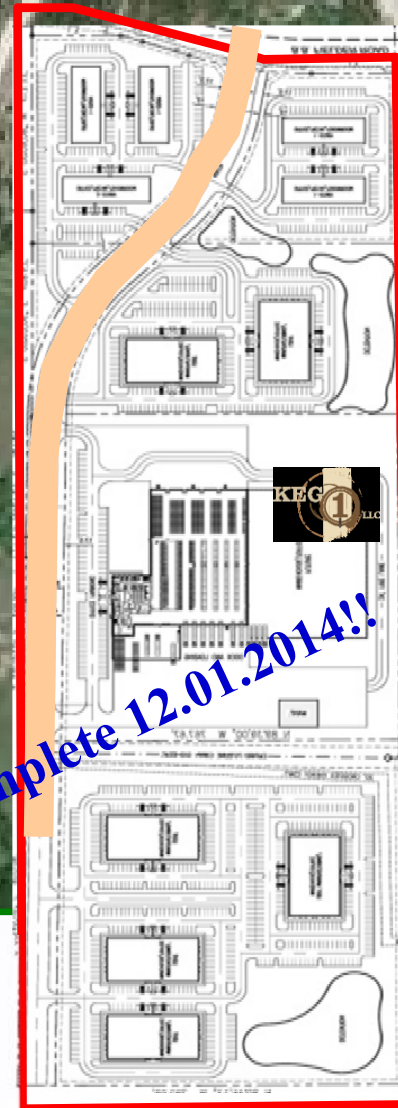
5950 Berkshire Lane Suite 200 Dallas, Texas 75225 214 545 6900 Office 214 545 6905 Fax edge-re.com



EDGE™

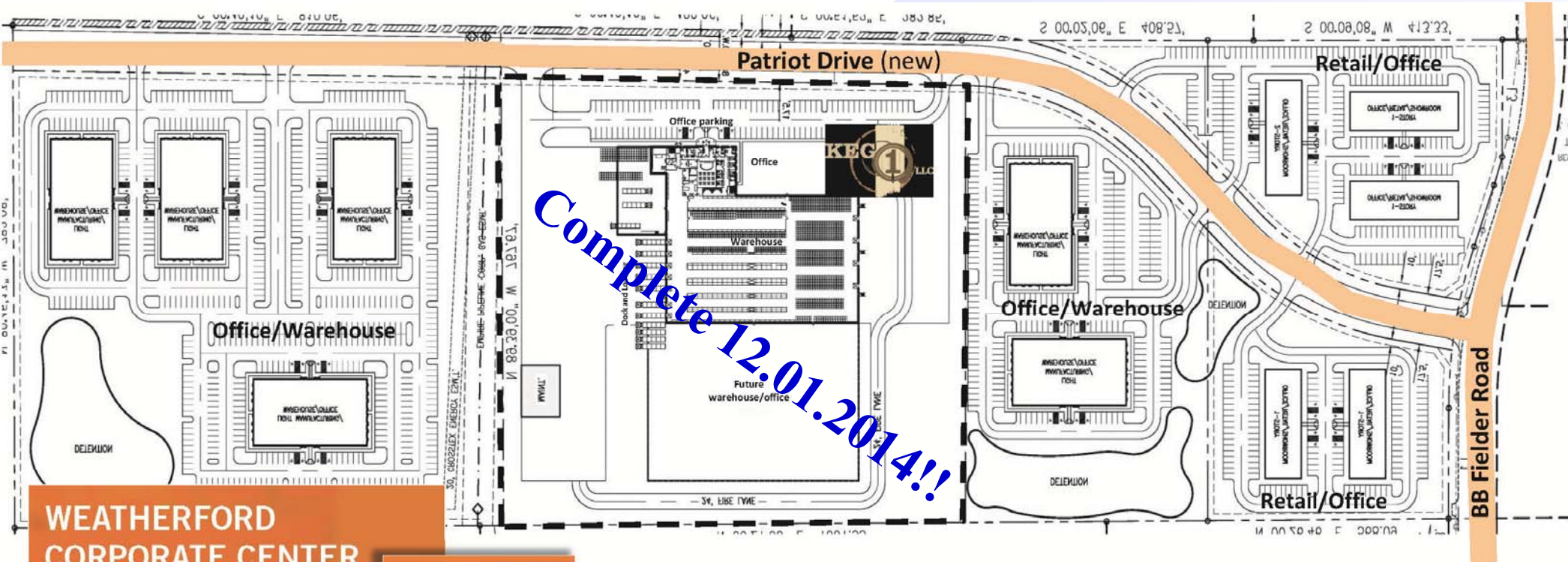
WEATHERFORD CORPORATE CENTER // Weatherford, Texas

# SITE



# WEATHERFORD CORPORATE CENTER

SEQ Bethel Road & BB Fielder Road  
Weatherford, Texas



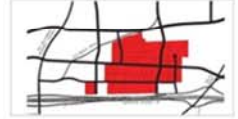
WEATHERFORD  
CORPORATE CENTER

**EDGE**  
REALTY PARTNERS



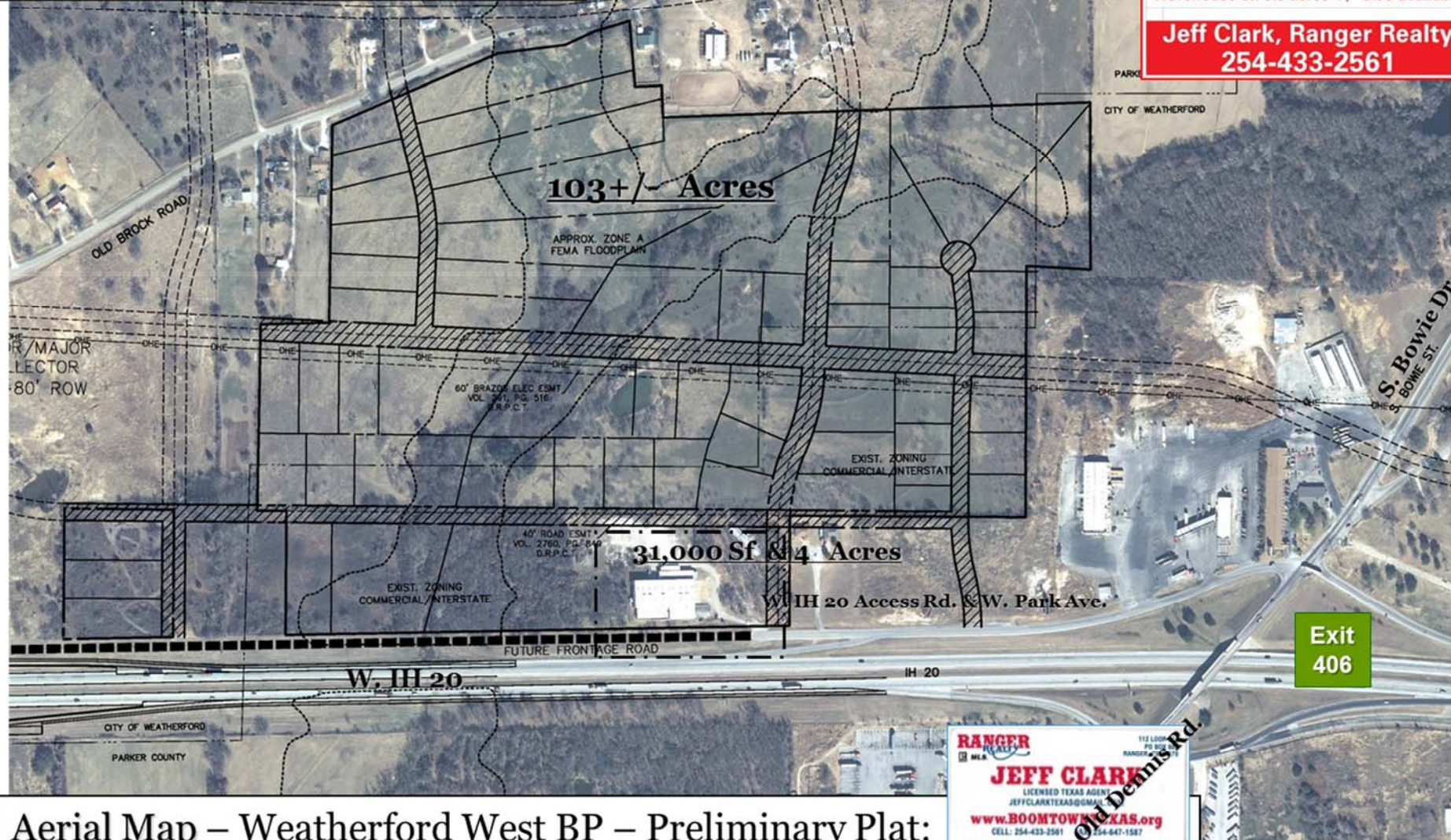


## Weatherford West



**103 Acres +/- Commercial**  
Warehouse on 3.5 acres +/- also available

**Jeff Clark, Ranger Realty**  
**254-433-2561**



**Aerial Map – Weatherford West BP – Preliminary Plat:**

**1226 W. Park Ave. (W. IH20 Access Road), Weatherford, Texas**

**RANGER REALTY**  
**JEFF CLARK**  
LICENSED TEXAS AGENT  
JEFFCLARKTEXAS@GMAIL.COM  
[WWW.BOOMTOWNTEXAS.ORG](http://WWW.BOOMTOWNTEXAS.ORG)  
CELL: 254-433-2561 254-647-1587  
LAND DEVELOPMENT • COMMERCIAL • ECONOMIC DEVELOPMENT