

PORT FREEPORT is GROWING



PORT FREEPORT HISTORY

In 1821, Stephen F. Austin chose the mouth of the Brazos River for the establishment of a colony and deep-water port. Over the next 60 years, the region's growth as a hub for commerce increased significantly. The Federal Channel Improvement Project at Freeport was authorized by the River and Harbor Act (RHA), approved on June 14, 1880. The RHA provided for construction of jetties for controlling and improving the channel at the mouth of the Brazos River. Work started in 1881 and completed in 1891. In 1912, the Freeport Sulphur Company established the city of Freeport near its new Sulphur mine at Bryan Mound. In 1927, the Brazos River Harbor Navigation District was created under Authority of the Texas Government and the Commission was created for the purposes of:

Making improvements for the navigation of inland and coastal waterways. -AND- For the preservation and conservation of said waterways in aid to navigation.

In 1929, the U.S. Army Corps of Engineers diverted the Brazos River, which created the Freeport Harbor and eliminated the regular siltation problems that had been caused by river flooding.

The Brazos River Harbor Navigation District opened Freeport Harbor General Facilities on December 11, 1954. On August 27, 1982, the Brazos River Harbor Navigation District purchased over 8,400 Acres of land from Freeport Sulphur Company. In 1986, President Ronald Reagan signed "The Water Resources Development Act of 1986" which authorized the construction of a 45-foot, deep water channel.

In 2007, the state of Texas passed House Bill 542, which legally changed the name of the Brazos River Harbor Navigation District to "Port Freeport." In 2014, Congress approved the Water Resources Reform and Development Act (WRRDA) which authorized a 55-foot channel deepening project. Port Freeport is actively collaborating with the US Army Corps of Engineers on the final engineering design before beginning the construction process.

Figure 1. - Economic Impact numbers

2012 EIS*	2014 EIS**
Total Jobs.....66,689	Total Jobs.....126,000
Total Income.....\$2.56 Billion	Total Income.....\$7.6 Billion
Total Economic Impact.....\$17.9 Billion	Total Economic Impact.....\$46.2 Billion
<small>*Prepared by Martin & Asociates</small>	<small>**Prepared by Travis ARM, LTD</small>

1916



**Atlantic Gulf
Pacific Company**

1916



**Florence Howard
At Freeport Docks**

1940s



Port Aerial

1950s



First Longshoremen

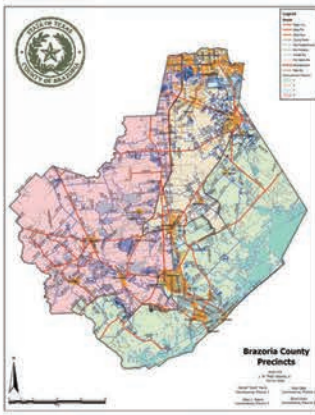


Figure 2 - Navigational District



Port Freeport - Take-A-Child Fishing Tournament

Economic Impact

Port Freeport is a fast growing Texas port located in Brazoria County and 85% of Brazoria County is encompassed within Port Freeport's Navigation District. Considering the Lone Star State is the 12th largest economy in the world, it is no surprise Port Freeport is growing at a rate of 15% per annum. As of 2016, \$25 billion of Oil and Gas related projects are being constructed in Brazoria County, and \$18.5 billion of those projects are along Port Freeport's Harbor Channel. Port Freeport's economic impact and the jobs created are both growing significantly since 2012. (See [Figure 1](#) for Economic Impact numbers, and [Figure 2](#) for Navigation District).

Environmental Awareness

Environmental stewardship is very important to Port Freeport because it has a direct impact on the quality of our lives. Over the years Port Freeport has been directly engaged in donating property for conservation, working with local environmental groups, and investing in environmentally friendly projects. Through continuous improvements, Port Freeport has a strong desire to seek methods to prevent and reduce any negative impact on the environment resulted by operational activities or services. Port Freeport is committed to protecting our environment for generations to come.

Community Involvement

Port Freeport is proud to be a partner in the communities of Brazoria County. We deeply value the support of our local communities and actively engage with them at every opportunity. Since 2001, with the support of community partners, Port Freeport has hosted the Annual Take-A-Child Fishing Tournament (TACFT) supporting various community non-profit organizations. Since 2008, Port Freeport has also hosted an annual Golf Tournament which supports various charities within the area.



Loading Whiskey & Rum At The Dock

1950s



Port Aerial

1961



Port Aerial

2015



Mediterranean Shipping Co. Loading At Velasco Terminal

Present

CREATING SUSTAINABILITY FOR **PORT USERS**

Port Freeport creates long-term opportunities for its business partners

- Port Freeport manages and invests in the Harbor Channel – providing a way to go deeper and wider for potential users to have safe and secure passage and to generate long-term growth opportunities.
- Port Freeport invests in new infrastructure in order to meet the demands of an ever-changing industry.
- Port Freeport values and invests in its greatest asset, its people; and customer service is always at the forefront of every business relationship.

BENEFITS OF USING **PORT FREEPORT**

45-foot Deepwater Channel

- 7.5 miles from deep water to the inner harbor
- Shortest deep water channel on the Texas Coast
- Very low maintenance dredging cost = savings for partners
- No air draft with minimal fog delays

Landlord Business Partnership

- 500+ acres environmentally mitigated, ready for development
- Additional 1,800 acres identified for industrial development
- Total of 8,000+ acres owned by Port Freeport

Foreign-Trade Zone

- Encompasses Brazoria and Fort Bend Counties
- Allows businesses to defer Customs Duties on imported goods
- Allows businesses to manage their inventory tax
- Helps users enhance their competitiveness

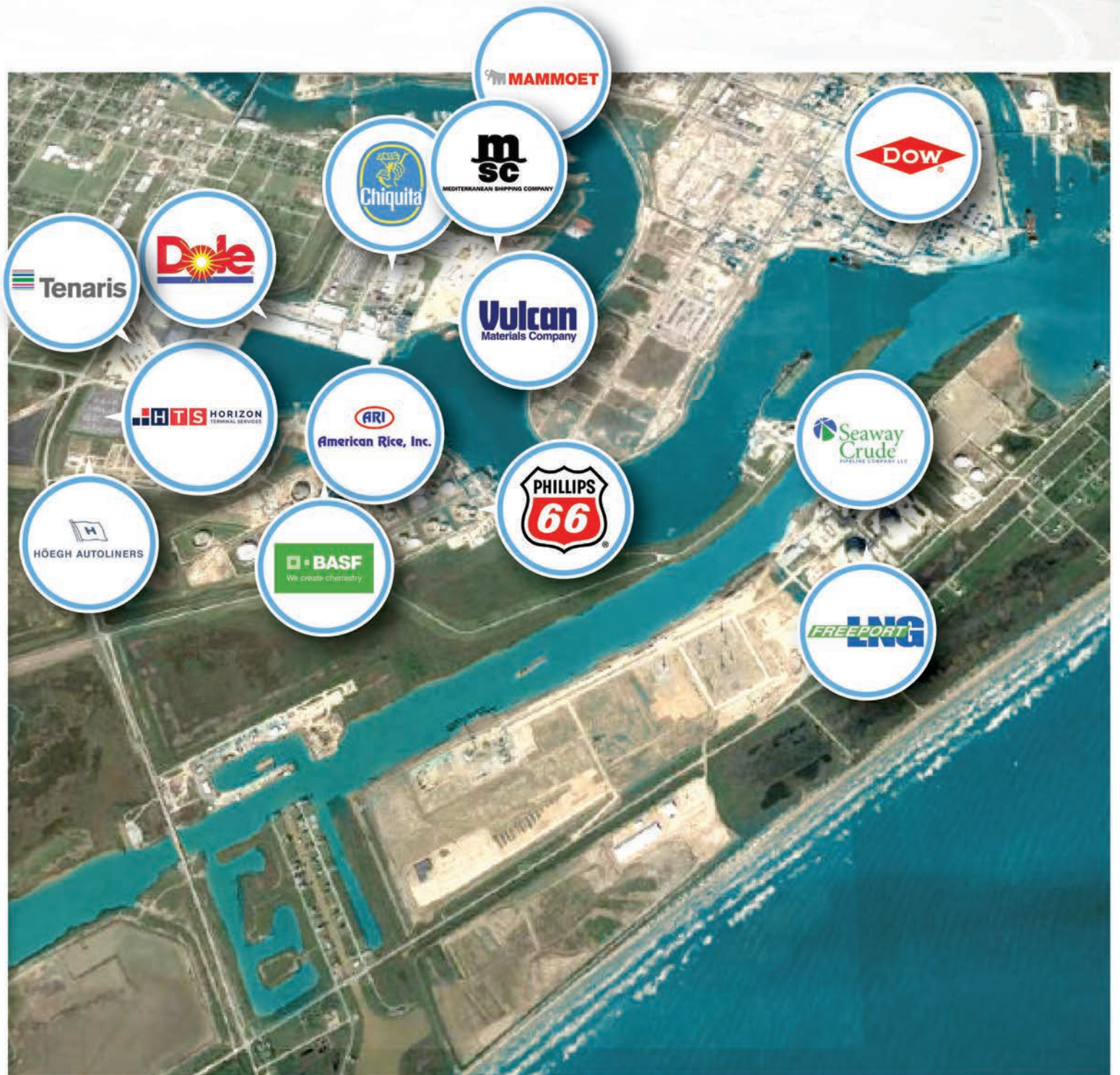
NEW State of the Art Infrastructure

- Container Terminal
- Original Equipment Manufacturer (OEM) Vehicle Processing and Storage Facility
- Breakbulk Terminal
- NEW Heavy Lift Corridor Routes
 - Reduces Truck Traffic*
 - Improves Road Safety*
 - Lowers Emissions*
- Future Rail Capacity Coming in 2018

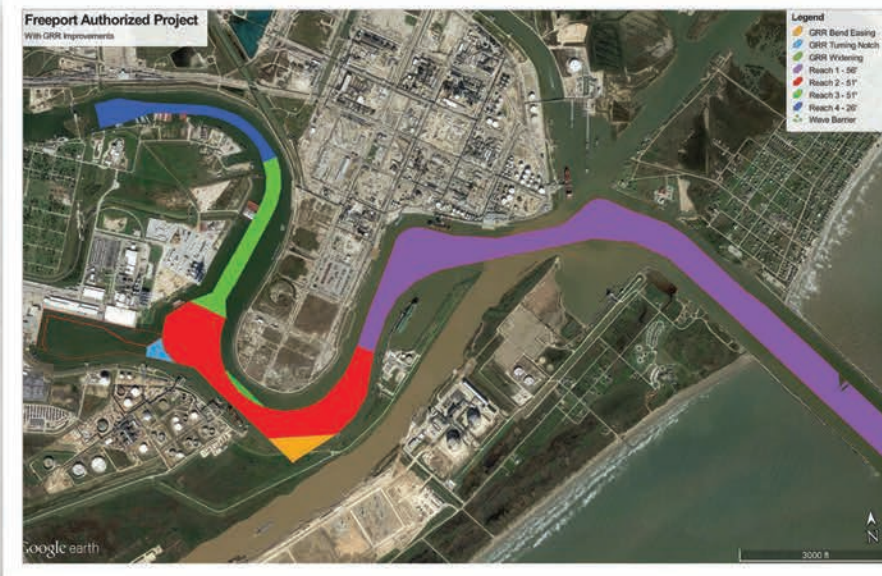
Seamless Connectivity Between Transportation Modes

Water → Highway → Rail

PARTNER FACILITIES



STRATEGIC INITIATIVES



Channel Deepening and Widening

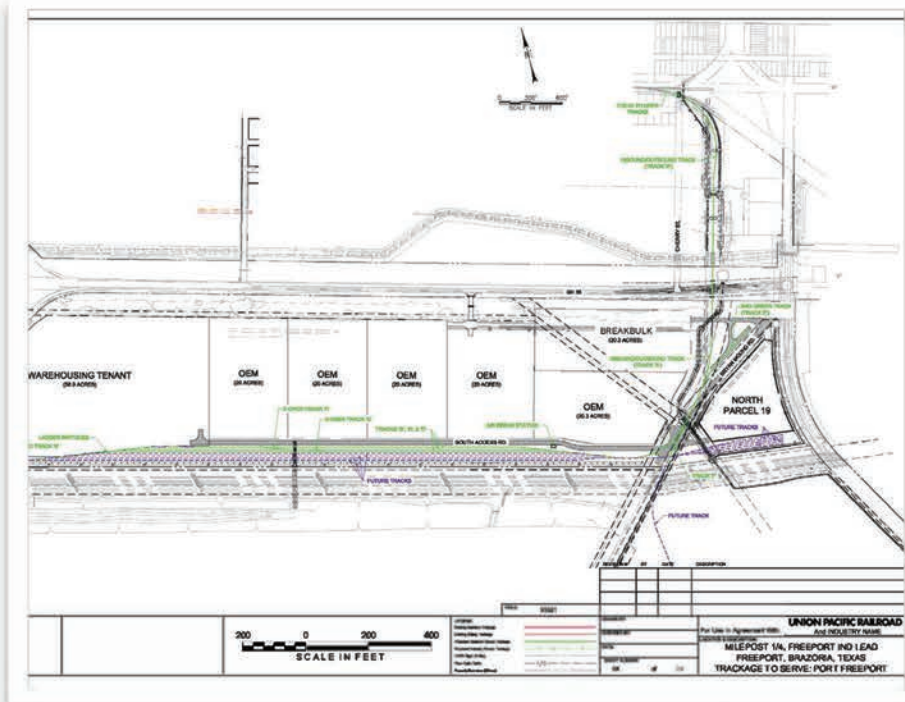
Currently at 45-foot depth and authorized by Congress in 2014 under the Water Resources Reform and Development Act (WRRDA) to deepen to 55-feet.

Further channel enhancements will include a Lower Bend Easing, Widening of the Channel and enhancements to the Upper Turning Basin.



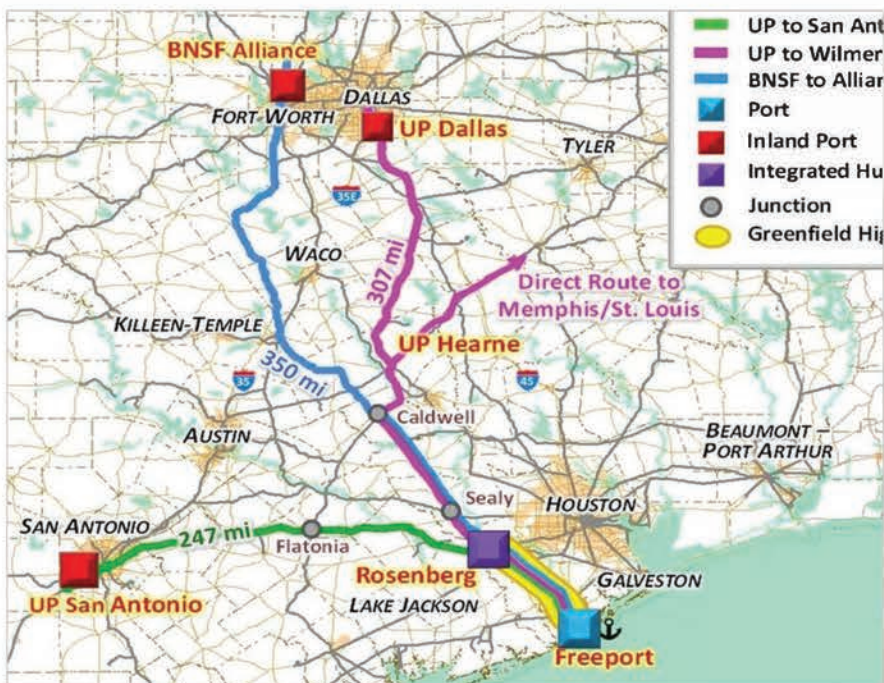
Expansion of Velasco Container Terminal

- Ability to receive Post Panamax Container Vessels
- 50-foot depth alongside
- 3 berths of 3,600 feet total
- 9 Post Panamax Cranes
- High Density Terminal with on-dock rail
- 1,500,000 Lift Capacity



New 240 Acre Multimodal Facility

- Capability to receive Manifest and Unit Trains
- Over 100 acres for OEM storage, processing, and parts distribution
- Additional warehousing and packaging facilities
- All facilities rail served to State Highways (SH) 36 and 288



Texas International Trade Gateway

The Trade Gateway is a long term development project. It will include a rail connection between Freeport and Rosenberg and a 4-lane freeway (SH 36) that will be developed over the next decade. Once completed, users of this corridor will be able to bypass Houston and connect to destinations like Dallas-Fort Worth and Chicago with faster transit times. This new route will also provide connections to the U.S. West and East Coasts as well as Mexico via 3 Class One Railroads (BNSF, UPRR, and KCS).

PORT FREEPORT IS GLOBAL

Ship From Anywhere Around The Globe



Administration Building

1100 Cherry Street | Freeport, TX 77541

Emergency Operations Center

801 Navigation Blvd. | Freeport, TX 77541

Main Gate (Gate 8)

1001 Navigation Blvd. | Freeport, TX 77541

South Gate (Gate 4)

1341 Pine Street | Freeport, TX 77541

North Gate (Gate 14)

74 East 2nd Street | Freeport, TX 77541

Mailing Address

1100 Cherry Street | Freeport, TX 77541

Phone Numbers

TF: 1-800-362-5743 | P: (979) 233-2667 | F: (979) 373-0023

