

# Existing Buildings FOR SALE!



**FUTURE East Loop:**

- Est. Start ~ 2016
- Est. Complete ~ 2025 (1- years)



FM 920 to  
Bridgeport

RWMH West Loop

FM 51 to Springtown, & Decatur

Future East Loop

W/PC EDC Hobson Industrial Park:  
Lots for BTS.



**1425 N. Bowie Dr. – 12K SF/5 acres**



U.S. 180 to Mineral Wells

**101 N. Main St. FF Bank – 23K Sf/4.3 ac. Parking Lot**



**JIM DUNCAN**

CENTURY 21 JUDGE, RITE COMPANY

Serving the Weatherford and Parker County area for over 40 years

Office: (817) 596-9446

Cell: (817) 613-6861

Fax: (817) 596-9449

jimduncan@judgetite.com

U.S. 180/Fort Worth Hwy

U.S. 180 to Fort Worth & IH 20

City- County  
Government

Medical, Financial &  
Government Centers

E. Bankhead Dr.

Tx Hwy Spur 321 Ranger Highway

S. Main

Weatherford College

Santa Fe Dr.

**1810 Banks Dr. – 34K  
SF/4 ac.**

SUBLEASE **34,592 SF**  
**Manufacturing Facility**  
on 4 acres  
1810 BANKS DRIVE, WEATHERFORD, TEXAS 76087

E. Bankhead Industrial  
Park

Regional Retail Center

Hwy 171/FM 51 to Cleburne & Granbury

**WEATHERFORD  
CORPORATE CENTER**  
500 Bethel Road & BB Fielder Road  
Weatherford, Texas

**Weatherford Corporate Center – 14 & 5.8 acres.**

WISD High School

**Weatherford West**  
103 Acres +/- Commercial  
Warehouse on 3.5 acres +/- also available  
Jeff Clark, Ranger Realty  
254-433-2561

(new)  
Exit  
405

Exit  
406

Exit  
408

Exit  
409

Exit  
410

(future)  
Exit  
411

This information is deemed to be  
from a reliable source, but is not  
warranted in any way by the  
Weatherford Economic Development  
Authority, Inc.

SUBLEASE

# 34,592 SF Manufacturing Facility on 4 acres

1810 BANKS DRIVE, WEATHERFORD, TEXAS 76087

## BUILDING FEATURES:

- 34,592 RSF on 4 acres
  - ✓ 4,150 SF Office Space
    - (8) – Large Offices
    - (2) – Conference Rooms
  - ✓ 30,442 SF Warehouse Space
    - (3) – Offices
- 6,625 SF of Covered Outside Storage
- 750 SF Paint Booth
- 15' Clear Height
- (13) Overhead Doors
  - ✓ (3) - 10X10
  - ✓ (3) - 12X12
  - ✓ (7) - 14X14
- ±7 Security Cameras
- Perimeter fencing with automatic gated entry & gravel yard
- Located just off I-20 west of Fort Worth in Weatherford
- Sublease available through November, 2025



1810 Banks Dr. – 34,592 SF/4 acres

➤ E. Bankhead Industrial Park – IH20, Exit 410 & E. Bankhead Hwy.

FOR MORE  
INFORMATION  
PLEASE CONTACT

**Brice Wells**  
817.333.1114  
brice.wells@cbre.com

**Bob Scully**  
817.333.1113  
bob.scully@cbre.com

©2015 CBRE, Inc. The information above has been obtained from sources believed reliable. While we do not doubt its accuracy, we have not verified it and make no guarantee, warranty or representation about it. It is your responsibility to independently confirm its accuracy and completeness.

**CBRE**

## PROPERTY PHOTOS:





FOR MORE  
INFORMATION  
PLEASE CONTACT

**Brice Wells**  
817.333.1114  
brice.wells@cbre.com

**Bob Scully**  
817.333.1113  
bob.scully@cbre.com

©2015 CBRE, Inc. The information above has been obtained from sources believed reliable. While we do not doubt its accuracy, we have not verified it and make no guarantee, warranty or representation about it. It is your responsibility to independently confirm its accuracy and completeness.

**CBRE**

**SUBLEASE** **34,592 SF**  
**Manufacturing Facility**  
**on 4 acres**



**1810 BANKS DRIVE, WEATHERFORD, TEXAS 76087**

**Burton St.**

**Banks Dr.**

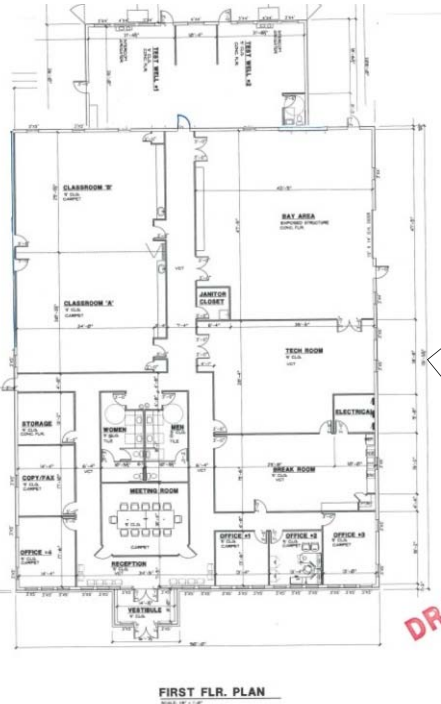
**Barnett St.**

**1810 Banks Dr. TopCo  
Mfgr./Machine Shop**





Weatherford/Parker County Economic Development Corp.  
**Hobson Industrial Park**  
1425 N. Bowie St., Weatherford, Texas



**FOR SALE! \$1.3MM**



**Wireline E&P (Schlumberger Int'l)**  
**(12,000 SF/5 ac. Training Center)**  
1425 N. Bowie St.

**Tim Clark, CCIM, Broker - Clark RE Group**  
400 W. IH20, Ste.100, Weatherford, TX  
817.578.0609 | [tim@clarkreg.com](mailto:tim@clarkreg.com)





# 23,000 SF FFB Bank Building for Sale!

**First Financial Bank Building - 2 Floors & dedicated Parking Lot.**

**101 N. Main St. (Downtown – NWQ); Weatherford, Texas**



**JIM DUNCAN**

CENTURY 21 JUDGE FITE COMPANY

Serving the Weatherford and Parker County area for over 40 years.

Office: (817) 596-9446

Cell: (817) 613-6861

Fax: (817) 596-9449

[jimduncan@judgefite.com](mailto:jimduncan@judgefite.com)

**FFB Parking Lot -  
50+/- spaces.~4.3+/- ac.**

**York Ave.**

**101 N. Main St.: 23K  
SF/ 2 story Bank  
Building**

**N. Main St.**

**Dallas Ave.**

**Shared community Parking**

