

# WACO AT A GLANCE

## POPULATION

**City of Waco: 124,805**  
**1990-2010 18.1% growth**  
**Waco MSA: 234,906**  
**1990-2010 24.2% growth**  
**7-county Region: 715,080**  
**1990-2010 26.5% growth**



## Incentives

- City of Waco Industrial Grants and NAFTA Zones
- Bond Financing
- Downtown Public Improvement Fund
- Foreign Trade Zone #246
- Freeport Exemption
- Tax Abatement (Property)
- Tax Increment Financing
- Texas Enterprise Zones
- Waco Industrial Foundation
- Waco-McLennan County Economic Development Corp
- Workforce Grants

WACO MSA  
 TEXAS  
 U.S.

Labor Force: 118,485  
 Employment: 108,887  
 Unemployment: 9,598  
 Unemployment Rate: 8.1%

Labor Force: 12,317,192  
 Employment: 11,276,205  
 Unemployment: 1,040,205  
 Unemployment Rate: 8.5%

Labor Force: 154,344,000  
 Employment: 140,335,000  
 Unemployment: 14,008,000  
 Unemployment Rate: 9.1%

AUGUST 2011

## EMPLOYMENT

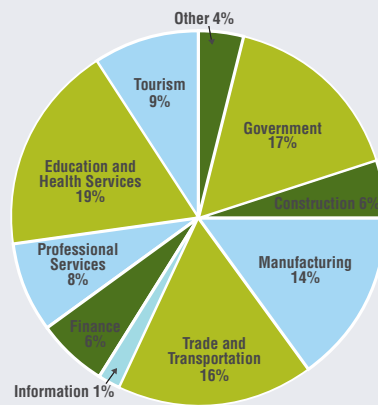
## MAJOR EMPLOYERS

|  |       |
|--|-------|
| Providence Healthcare Network              | 2,618 |
| Baylor University                          | 2,583 |
| Wal-Mart (all locations)                   | 2,561 |
| Waco ISD                                   | 2,276 |
| L-3 Communications                         | 2,079 |
| Hillcrest Baptist Medical Center           | 1,793 |
| City of Waco                               | 1,506 |
| H-E-B (all locations)                      | 1,500 |
| Midway ISd                                 | 1,067 |
| Sanderson Farms Inc.                       | 1,041 |
| Examination Management Service, Inc (EMSI) | 861   |
| McLennan County                            | 830   |
| McLennan Community College                 | 826   |
| Veterans Administration Medical Center     | 800   |
| Cargill Meat Solutions                     | 685   |
| Texas State Technical College              | 672   |
| Mars Chocolate                             | 650   |
| Veterans Affairs Regional Office           | 650   |
| Allergan, Inc.                             | 605   |

## Business Parks

- Texas Central Park
- Waco International Aviation Park
- Waco Regional Airport
- Central Texas Technology and Research Park
- McGregor Industrial Park
- Commerce Park
- Texas Corridor Industrial Park
- Robinson Industrial Park
- Young Industrial Park
- Moody Business and Technology Plaza

• [WacoProspector.com](http://WacoProspector.com)



SOURCE: TEXAS WORKFORCE COMMISSION - LABOR MARKET INFORMATION

Utility information available at [WacoCustomReports.com](http://WacoCustomReports.com)

## GOVERNMENT

**McLennan County (Waco MSA) has 19 incorporated cities, including Waco.**

**Waco is a municipal corporation; a council/manager form of government.**

## TRANSPORTATION

Interstate Highway 35  
 US Highway 77 and 84  
 State Highway 6, 31, 164 and 317

Waco Transit System  
 Greyhound Bus Lines  
 Waco Eagle/The Streak shuttle service to DFW airport

Waco Regional Airport  
*American Airlines*  
*Continental Airlines*

TSTC Airport McGregor Executive Airport

Union Pacific  
 Burlington Northern/Santa Fe  
 Amtrak

HIGHWAY  
 BUSES  
 AIR  
 RAILROADS

## LAND AREA

City of Waco: 95.3 miles  
 MSA: 1,041.9 miles

**Some say WACO is one of Texas' best kept secrets**

No traffic, central location, vibrant community spirit and excellent quality of life are just a few reasons people love to live here

**Education**

**McLennan County:** 20 school districts (public, private, and charter)

**Baylor University:** 13,813 students

**McLennan Community College:** 9,928 students

**Texas State Technical College Waco:** 5,714 students

**Total enrollment for Waco MSA:** 29,455 students

**Within 200 miles:** 563,907 students

**CLIMATE**

**Average Temperature:**

Annual: 66.7 degrees F

Minimum: 34.2 degrees F (Jan)

Maximum: 96.8 (July)

**Rainfall:**

Average Annual: 32 inches

**Elevation:**

427 feet above sea level

**Health Care**

**Hillcrest Baptist Medical Center**  
250 beds

**Providence Healthcare Network**  
214 beds

**Scott & White Clinics** 14 clinics

**Family Health Center**

**Veterans Administration Medical Center** 433 beds



**RECREATION**



**Sports Events & Recreation**

Waco is within 200 miles of three national parks and more than 50 state parks and historic sites. There are more than 60 parks within the community, including Cameron Park, offering scenic hiking and biking trails, rock climbing and the Cameron Park Zoo.

- [WacoWeDoSports.com](http://WacoWeDoSports.com)
- [WacoCVB.com](http://WacoCVB.com)
- [Waco-Texas.com](http://Waco-Texas.com)

**Media**

One daily newspaper and 5 weekly newspapers service the community. *Waco Tribune Herald:* [WacoTrib.com](http://WacoTrib.com)

Twelve local radio stations provide programming in English and Spanish.

National Public Radio (NPR) provided through Baylor University 103.3 FM.

Local television stations within the community:

- [KCENTV.com](http://KCENTV.com) - NBC affiliate
- [KWKT.com](http://KWKT.com) - FOX affiliate
- [KWTX.com](http://KWTX.com) - CBS affiliate
- [KXXV.com](http://KXXV.com) - ABC affiliate
- WCCC-TV - Waco City Cable Channel

**ARTS**



**Arts**

From art museums and galleries to the Waco Symphony Orchestra, Greater Waco is rich in culture. Baylor University and McLennan Community College offer numerous performances each year along with the Waco Hippodrome and Waco Civic Theatre in outdoor venues on the Brazos and Bosque rivers and in three performing arts theaters.

- [WacoWeDoArts.com](http://WacoWeDoArts.com)
- [WacoCVB.com](http://WacoCVB.com)



**DINING**

**Dining**

Waco Convention & Visitor Bureau Dining Guide

- [WacoCVB.com](http://WacoCVB.com)

WACOAN magazine's Best of 2010, including restaurants, and venues



LAKE WACO WETLANDS

**Best of Waco**

Please visit:

[WACOAN.COM/BESTOFWACO](http://WACOAN.COM/BESTOFWACO)