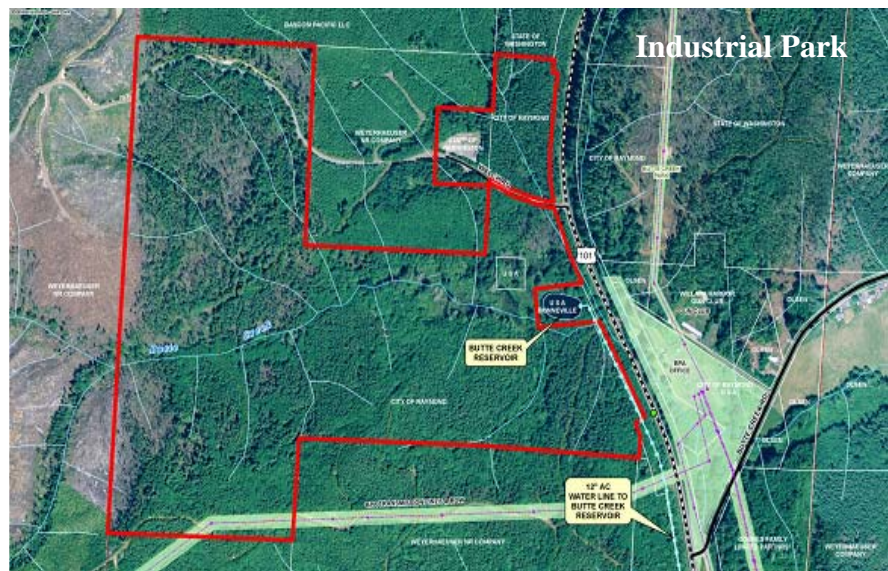


City of Raymond

Raymond, Washington

- 184 prime zoned Industrial acres
- Multiple Port access
- 10 minutes to the Port of Willapa Harbor
- 30 minutes—1 hour to nearest deep water port
- 1.5 hours to the Port of Olympia
- Strong Regional Workforce
- Cost of Living 85.5%
- Low-cost energy
- Highspeed telecommunications
- Reasonable travel time to metropolitan locations: Olympia, Seattle and Portland, Or
- Low Cost of Doing Business



For
**SALE /
LEASE**



Features Include: This prime property is located on Highway 101 within city limits.

Access to many community services are within five miles: fire stations, police stations, ambulance, hospital and airport.

Additional Information: Raymond is an attractive place to live, work and play. You will find year round kayaking, fishing, bike riding, storm watching, etc. We offer a high-quality lifestyle in a world class natural setting. Truly an outdoorsman's paradise.

