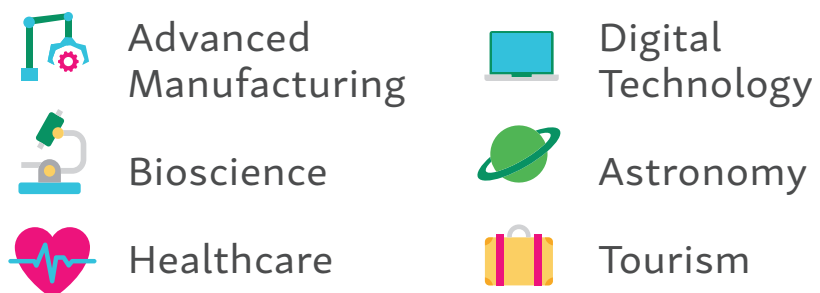


INNOVATION

- **Moonshot** located at NACET offers entrepreneurs over 38,000 square feet of flexible office, manufacturing and lab space.
moonshotaz.com
- The **Market of Dreams**, is a micro-entrepreneurship center and community supported marketplace operated seven days a week by the Sunnyside Neighborhood Association (SNA) of Flagstaff. Market of Dreams empowers residents to create their own small businesses and offers the ability to gain job skills while encouraging entrepreneurship, business management and grassroots leadership.
facebook.com/marketofdreams



KEY INDUSTRY SECTORS



INCENTIVES

The state of Arizona has lowered taxes, streamlined regulations, and established a suite of incentives to support corporate growth and expansion. The Arizona Competitiveness Package, and establishes Arizona as one of the most desirable places for expanding companies to do business. Give your company a competitive edge by utilizing Arizona's incentives.

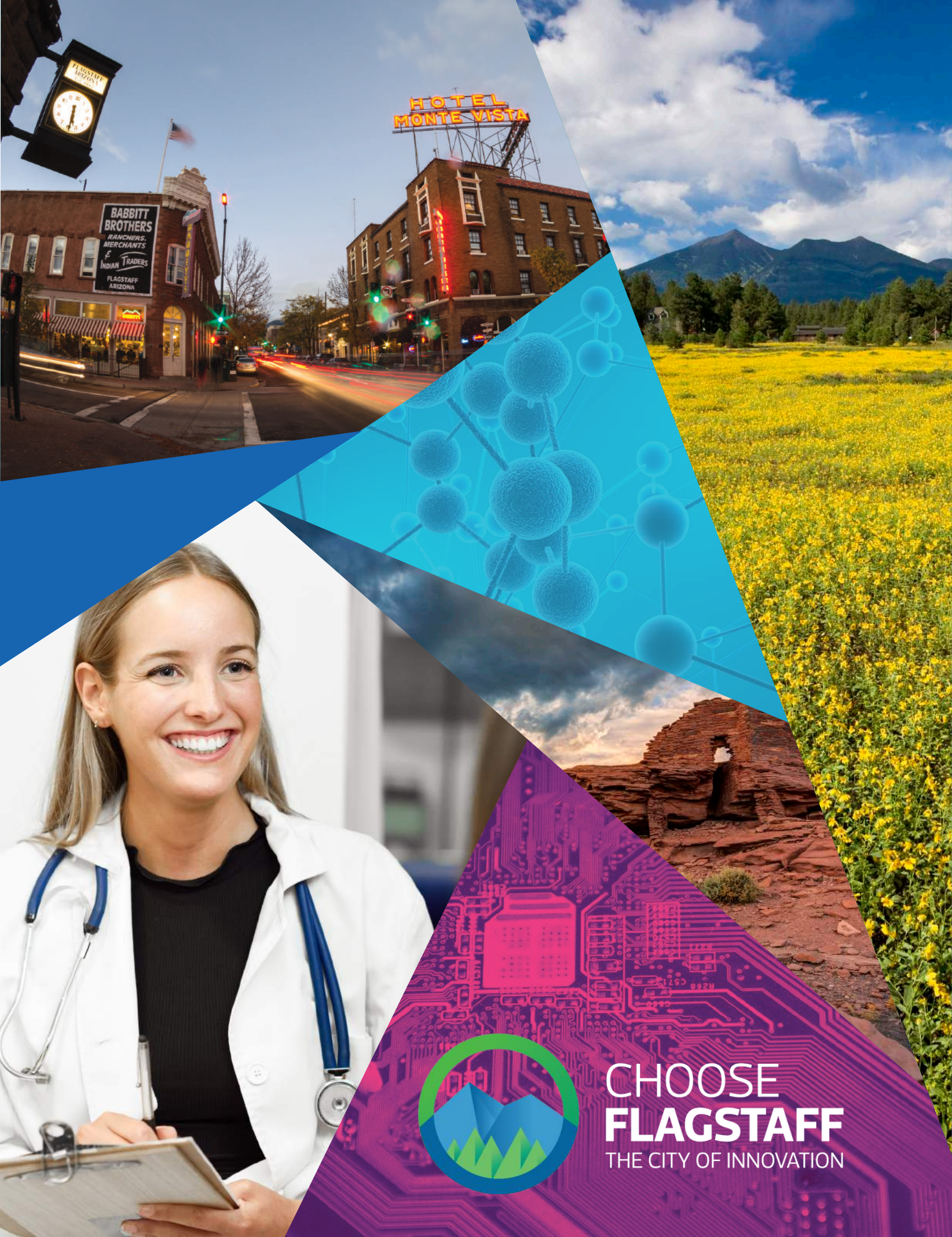
azcommerce.com/locate/incentives

WORKFORCE RESOURCES

- **Goodwill of Northern Arizona**
goodwillaz.org/northern-arizona
- **Coconino County Career Center**
coconino.az.gov/124/Career-Center
- **NAU Career Development Center**
nau.edu/career
- **Comprehensive One-Stop Shop**
arizona@work.com

EDUCATION

- **12 Charter Schools**
- **15 Public Schools**
- **Northern Arizona University**
nau.edu
- **Coconino Community College**
coconino.edu
- **College America**
collegeamerica.edu



BUSINESSES THRIVE WHERE PEOPLE THRIVE.



CHOOSE
FLAGSTAFF
THE CITY OF INNOVATION

CONTACT GAIL JACKSON,
BUSINESS ATTRACTION MANAGER:
928-213-2965 • chooseflagstaff.com
211 W. Aspen Ave, Flagstaff, AZ 86001



CHOOSE
FLAGSTAFF
THE CITY OF INNOVATION



QUICK FACTS

FPMO 93,000 (Buxton Analytics)

Total Population 71,975 (July 1 2017 US Census)

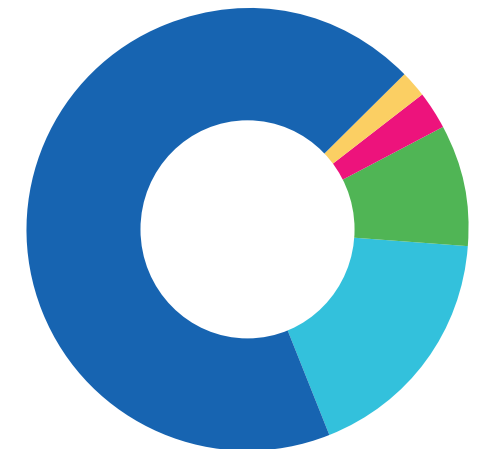
Median Household Income \$50,677 (Census Bureau)

Unemployment Rate 3.9% (Bureau of Labor Statistics Aug. 2018)

High School Degree 92.2%

Bachelor's Degree 44.3%

DIVERSITY



FLAGSTAFF TOP 20 EMPLOYERS

1,200 Employees COCOONINO COUNTY ARIZONA	200 Employees The University of Arizona	305 Employees Nestlé PURINA PetCare	2,815 Employees NORthern ARIZONA UNIVERSITY
200 Employees The University of Arizona	300 Employees Cocoonino Community College	152 Employees pepsi	989 Employees The University of Arizona
125 Employees WELBROOK Senior Living	140 Employees THE PEARS	275 Employees REHABILITATION HOSPITAL OF NORTHERN ARIZONA	2,350 Employees Northern Arizona University Medical Center Flagstaff Medical Center
133 Employees JOY	150 Employees LITTLE AMERICA HOTEL	630 Employees Walmart	2,200 Employees GORE
220 Employees LITTLE AMERICA HOTEL	421 Employees GRAND CANYON RAFTING & HIKING	514 Employees NAVAJO NATION GAMING ENTERPRISE Twin Arrows Casino	1,385 Employees FLAGSTAFF JUNIOR HIGH SCHOOL DISTRICT

UTILITIES

- Water: City of Flagstaff
- Electricity: Arizona Public Service
- Natural Gas: Unisource Gas
- Internet: Suddenlink & Centurylink

TAXES

Businesses and individuals will not pay franchise, business inventory and no estate tax in Arizona.

QUALITY OF LIFE

Month	F°		C°		Precipitation inches cm	
	High	Low	High	Low	High	Low
January	43	6	16	-9	2.18	5.54
February	46	8	19	-7	2.56	6.50
March	50	10	23	-5	2.62	6.65
April	58	14	27	-3	1.29	3.28
May	68	20	34	1	0.80	2.03
June	79	26	41	5	0.43	1.09
July	82	28	50	10	2.40	6.10
August	80	27	49	9	2.89	7.34
September	74	23	42	6	2.12	5.38
October	63	17	31	-1	1.93	4.90
November	51	11	22	-6	1.86	4.72
December	44	7	17	-8	1.83	4.65

Flagstaff Annual Averages
 Average Annual Days of Sunshine: 288 days
 Average Annual Precipitation: 22.96 inches (58.32 cm)
 Average Annual Snowfall: 108.8 inches (276.35 cm)
 Earliest Snowfall on Record: September 19, 1965
 Latest Snowfall on Record: June 8, 1907



Flagstaff Features

- 3,069 acres of Municipal Open Space
- Over 50 miles of Flagstaff Urban Trails
- Surrounded by National Forest
- Flagstaff Symphony
- Grand Canyon National Park

Rail Options

BNSF provides daily rail access to the ports of Long Beach and Houston. Amtrak serves Flagstaff twice daily connecting Los Angeles and Chicago.

Airport

Flagstaff Pulliam Regional Airport offers daily flights to Phoenix via American Airlines. Coming in Spring of 2019, American Airlines will add daily service to Dallas Fort-Worth (DFW). United Airlines will also be joining us adding daily flights to Denver.

City	miles	km
Phoenix	142	229
Albuquerque, NM	323	520
Grand Canyon National Park	81	130
Lake Powell/Page	136	219
Las Vegas, NV	252	406
Los Angeles, CA	467	752
Prescott	87	140
Tucson	257	414
Sedona	28	45
Williams	32	51
Winslow	58	93

Distances from Flagstaff



TRANSPORTATION

miles km